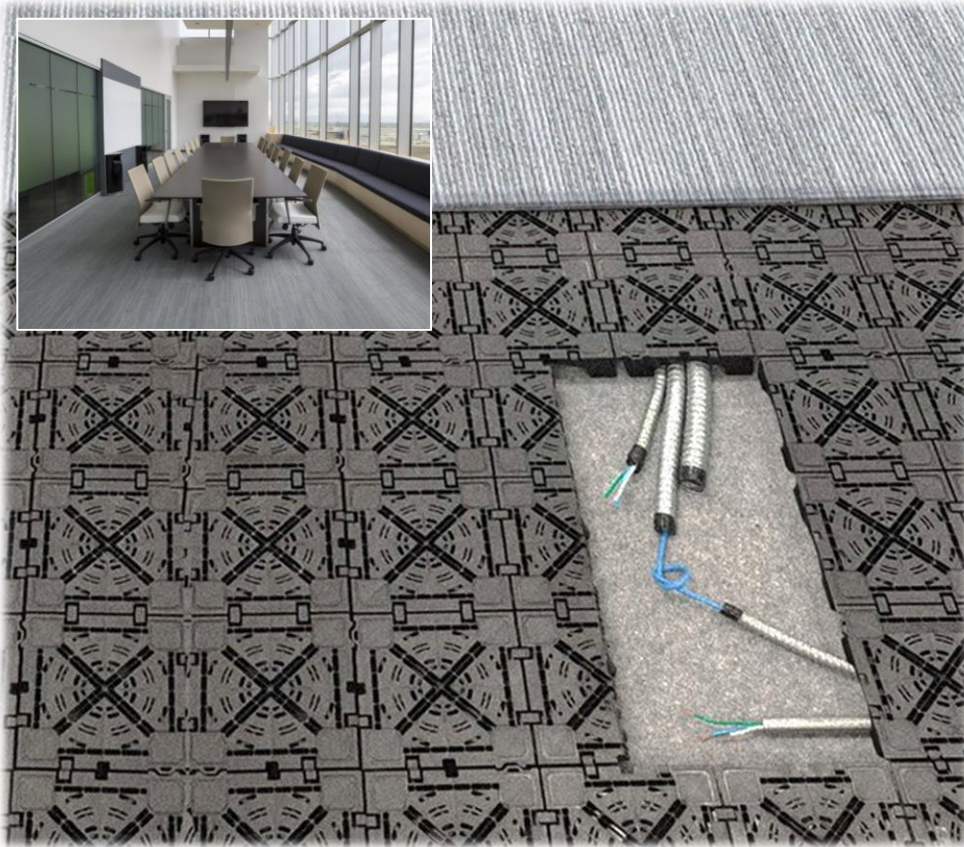
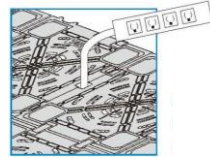


● Light and durable raised resin floor system



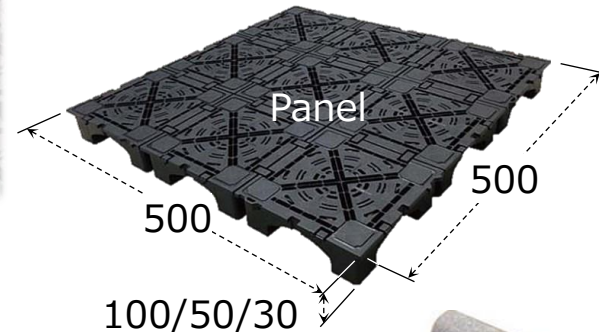
**Key features**

- Good for offices with a lot of wiring
- Cables and cords can be routed under panels
- Easy wiring when changing the room layout
- Wire pass channels
- Easy installation just by placing
- Lightweight
- 3000N (≒306kg) Max Load



Recommended finishing materials is carpet

● Products



(Optional parts)



Slope



Additional leg

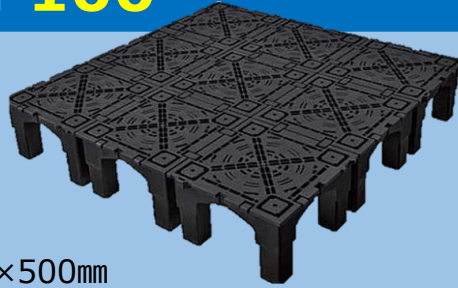
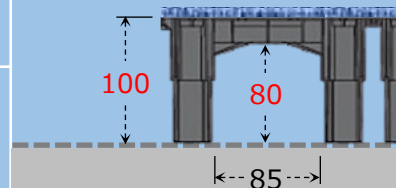
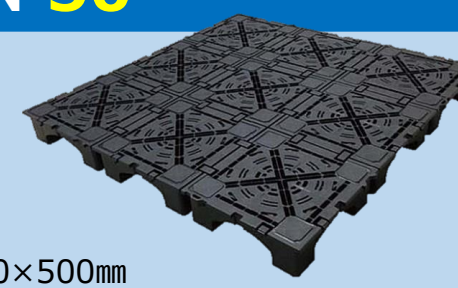
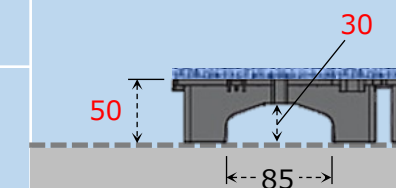

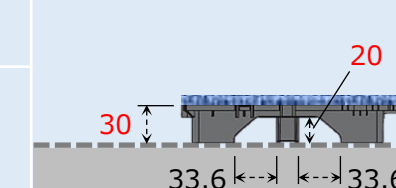





Sheet under the panel



Aluminum end cover

- Material : PP
- Color : Black
- Size : 500×500×Height 100mm  
500×500×Height 50mm  
500×500×Height 30mm
- MOQ : 1m<sup>2</sup> (4pcs)

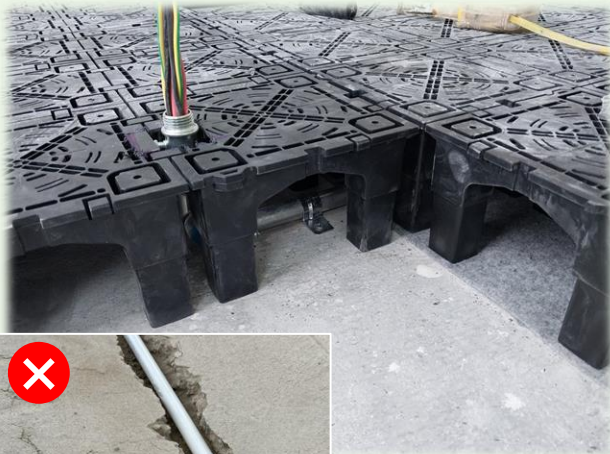
Panel	TN-100	TN-50	TN-30
<b>Panel Height</b>  <b>Height of the space under the panel</b>	 PP 500×500mm  	 PP 500×500mm  	 PP 500×500mm  
<b>Weight</b>	8.9kg/m <sup>2</sup>	6.8kg/m <sup>2</sup>	5.6kg/m <sup>2</sup>
<b>Max Load</b>	3000N (≒306kg)	3000N (≒306kg)	3000N (≒306kg)
<b>Accessories</b>	 Additional leg 100S  Sheet under the panel Width 1m×20m roll  Slope 100 Width 250×Length 668mm (Consists of 3 parts)  Aluminum end cover Length 2m (Consists of 2 parts)	 Additional leg 50S  Sheet under the panel Width 1m×20m roll  Slope 50 Width 250×Length 333mm  Aluminum end cover Length 2m	 Additional leg 30S  Sheet under the panel Width 1m×20m roll  Slope 30 Width 250×Length 333mm  Aluminum end cover Length 2m

# ● If you use FUKUVI's OA Flooring...



## Have space

Easy to wire  
No damage to the floor



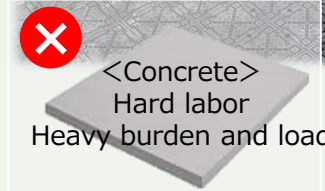
## Plastic product

Easy to cut  
Less dust and noise



## Light weight

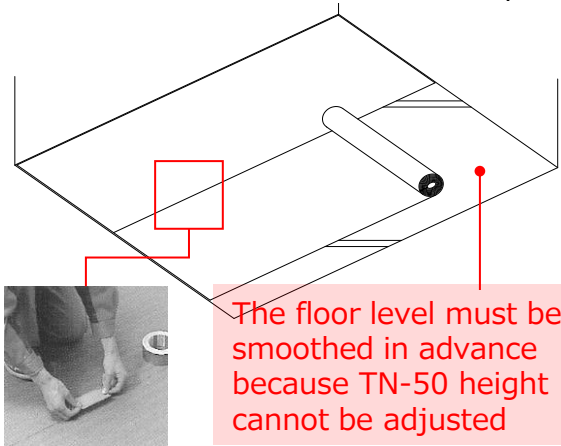
Easy to carry  
Less burden on the body  
Less load on the floor



# ● Installation

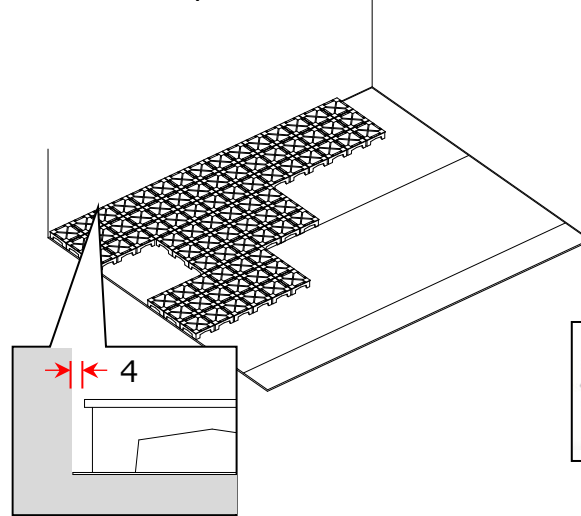
## ① Lay a sheet on the floor

- Clean the floor
- Do not overlap seams
- Fix the seams with adhesive tape



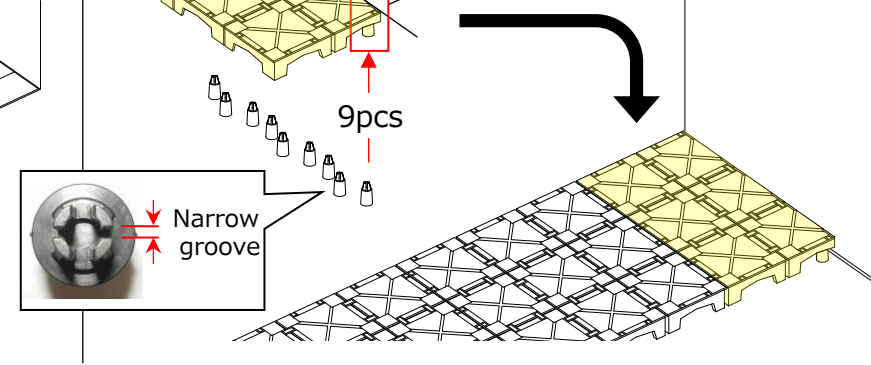
## ② Line up the base panel

- 4mm away from the wall



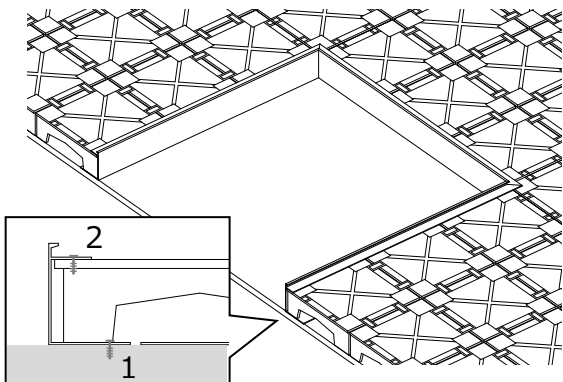
## ③ Attach additional leg to the back of the cut base panel

- Insert a narrow groove into the rib on the back
- Install 9 pieces for a length of 500mm



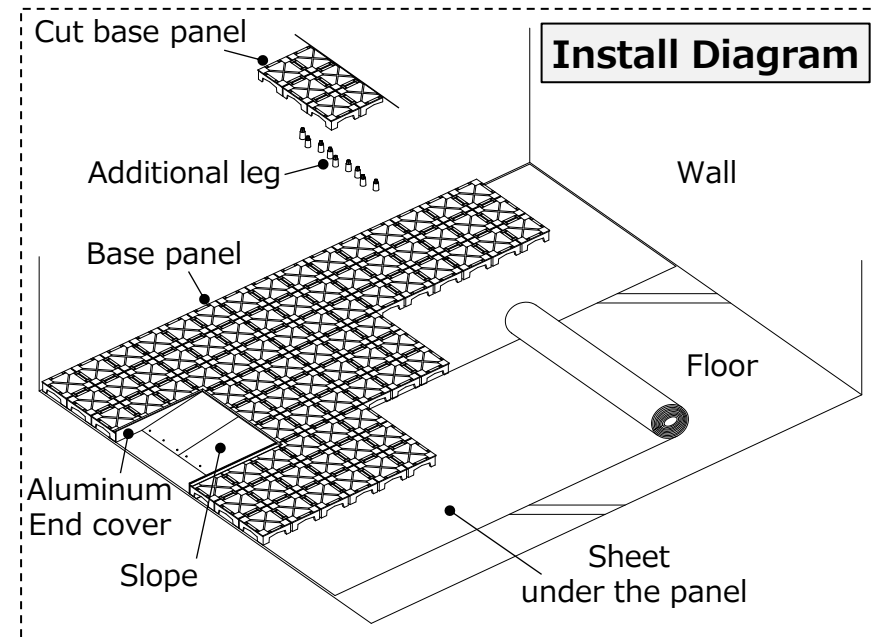
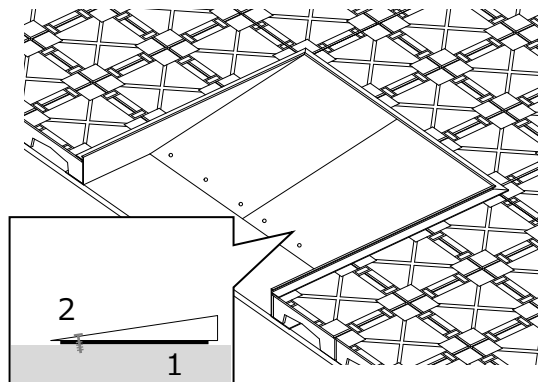
## ④ Attach the aluminum end cover line on the side of the slope installation position

1. Attach to floor with concrete screws
2. Attach to a base panel with general screws



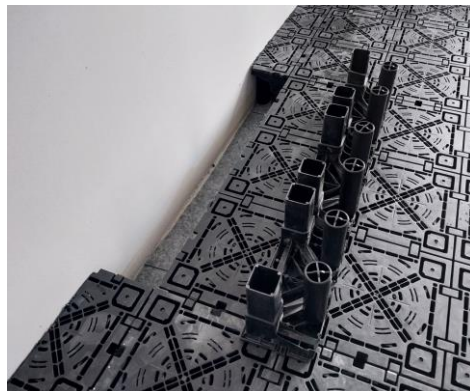
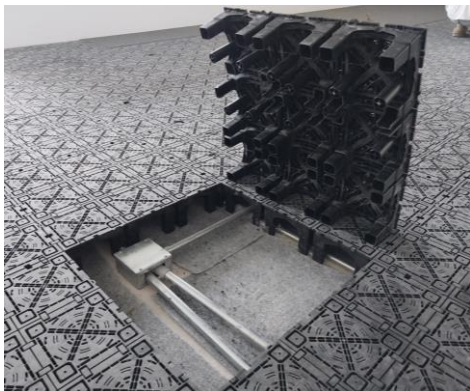
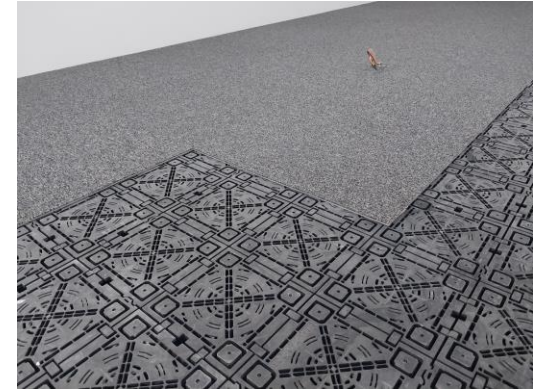
## ⑤ Fix a slope

1. Stick it on the floor with double-sided tape
2. Attach with concrete screw

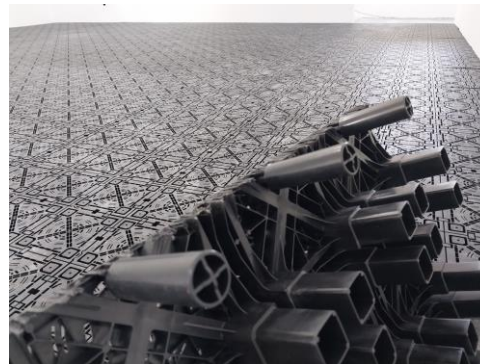


# ● Construction example <OA Flooring TN-100>

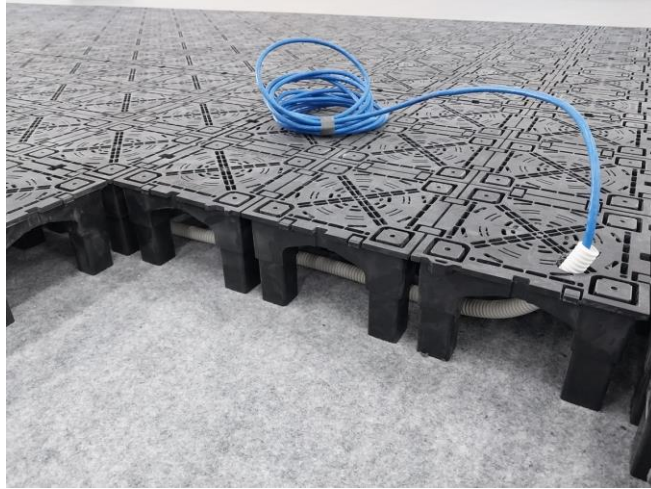
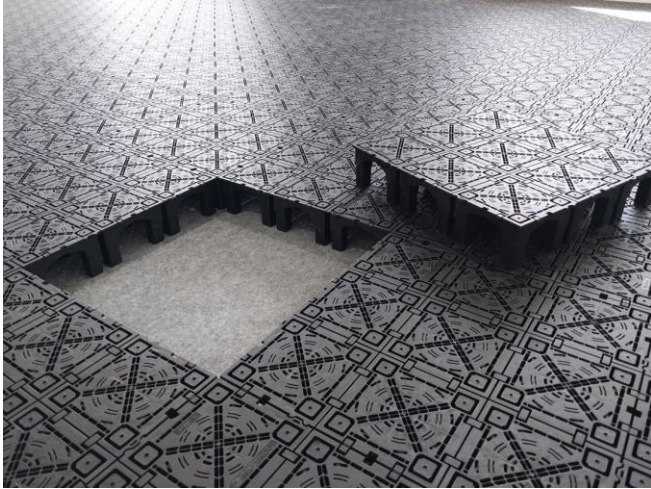
## ■ OFFICE (HO CHI MINH / VIETNAM)



■ WAREHOUSE OFFICE (HO CHI MINH / VIETNAM)



■ WAREHOUSE OFFICE (HO CHI MINH / VIETNAM)



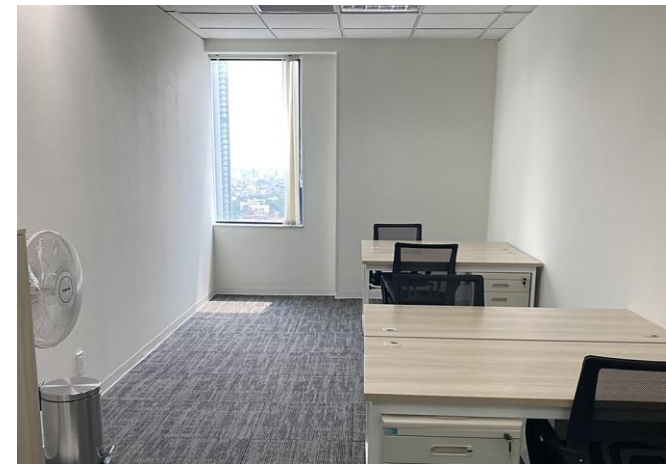
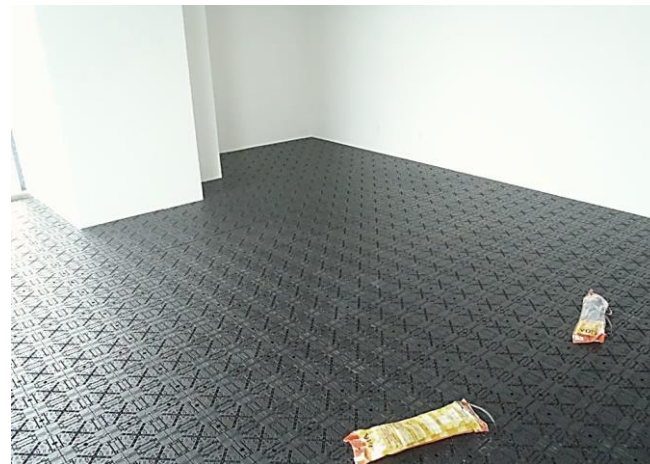
■ FACTORY OFFICE (BINH DUONG/VIETNAM)





# ● Construction example <OA Flooring TN-50>

## ■ OFFICE (HANOI/VIETNAM)



## ■ OFFICE (BANGKOK/THAILAND)

