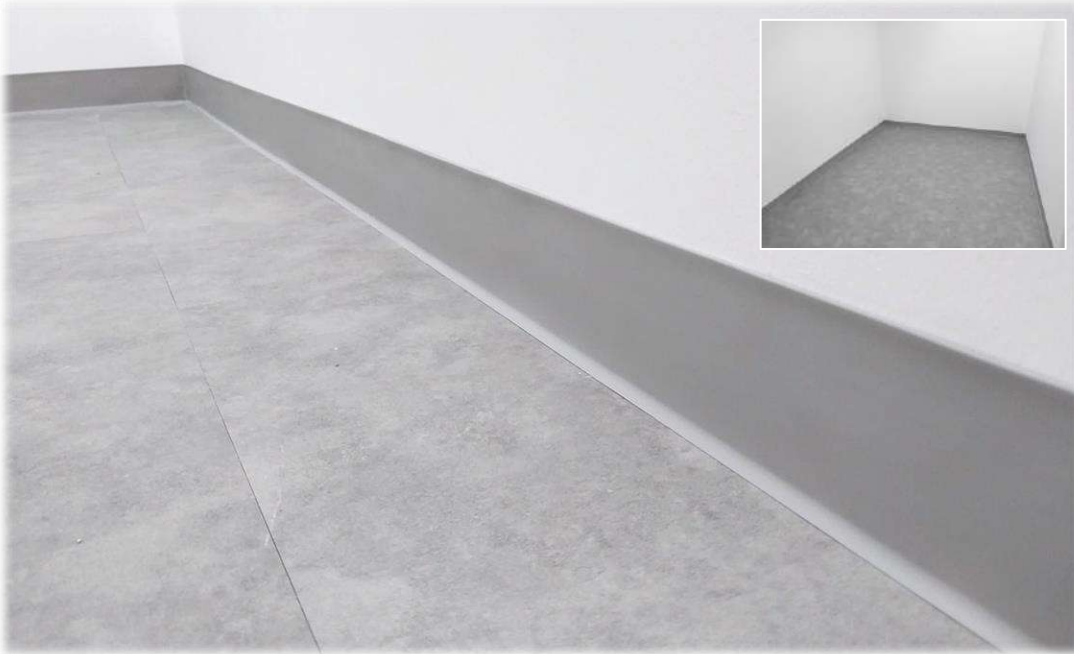
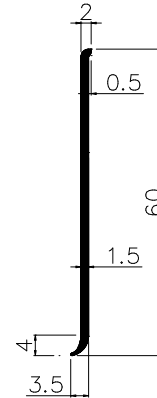


● Protects wall base from scratches and dirt

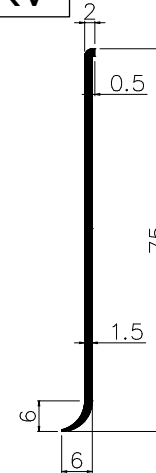


● Product drawing

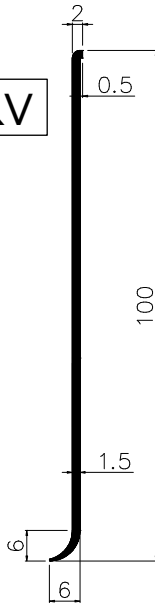
60RV



75RV



100RV



● **Material** : PVC

● **Color** : Black, Dark gray, Light gray, White

● **Length** : 30m(roll)

● **MOQ** : 1 roll

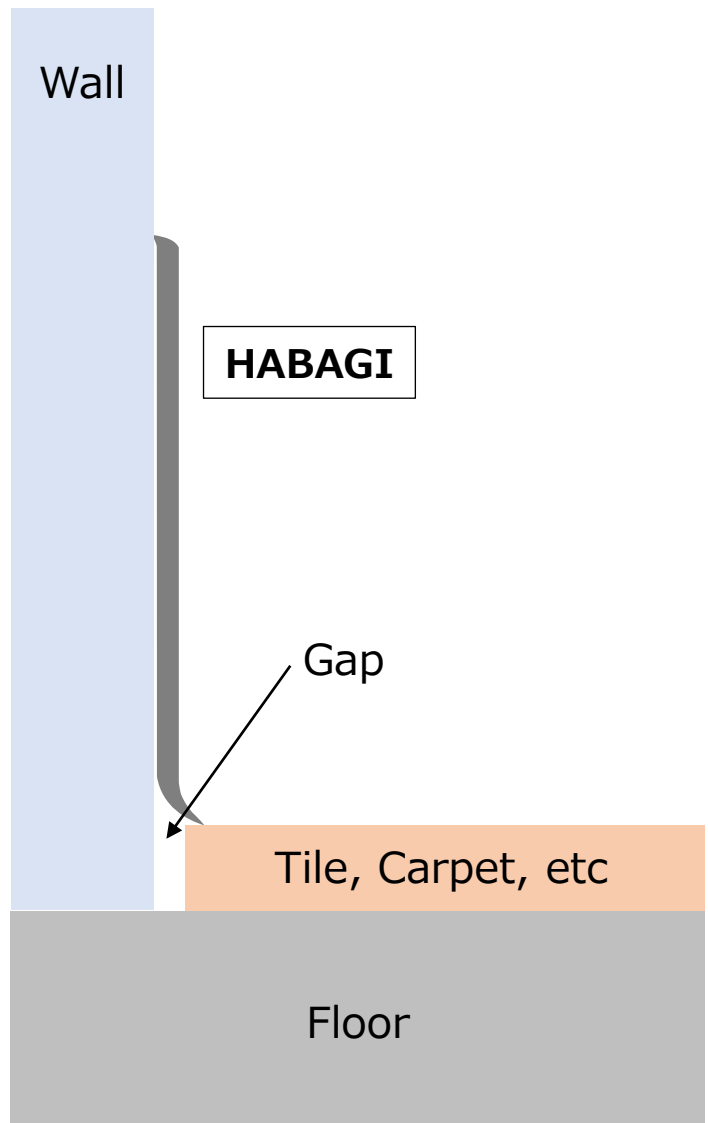
Key features

- Protects wall base from scratches and dirt
- Creates straight and neat lines between walls and floor
- Easy to cut with box cutter and attach with adhesive glue
- Soft resin material makes it easy to install along curves
- Does not turn white when bent
- Compact roll storage makes it easy to carry and stock



● Purpose of HABAGI

To hide the gap between the wall and the floor



To prevent dirt from dust and water and scratches from cleaning tools



● Installation

Tools prepared in advance (Recommendation)

Adhesive



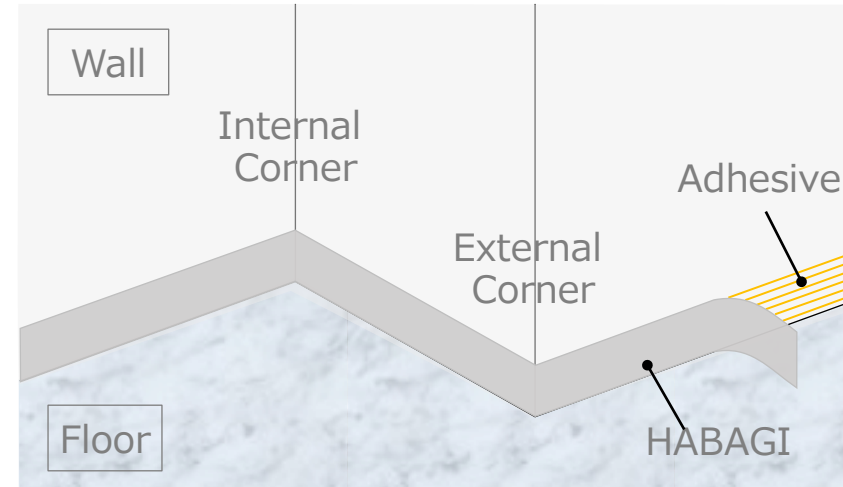
Comb-shaped
Spatula



Roller



Box Cutter



① Apply adhesive to the back of HABAGI , or the back of HABAGI and the wall with a spatula

Tip Use a comb-shaped spatula to apply the required amount evenly

Apply to HABAGI



Apply to wall

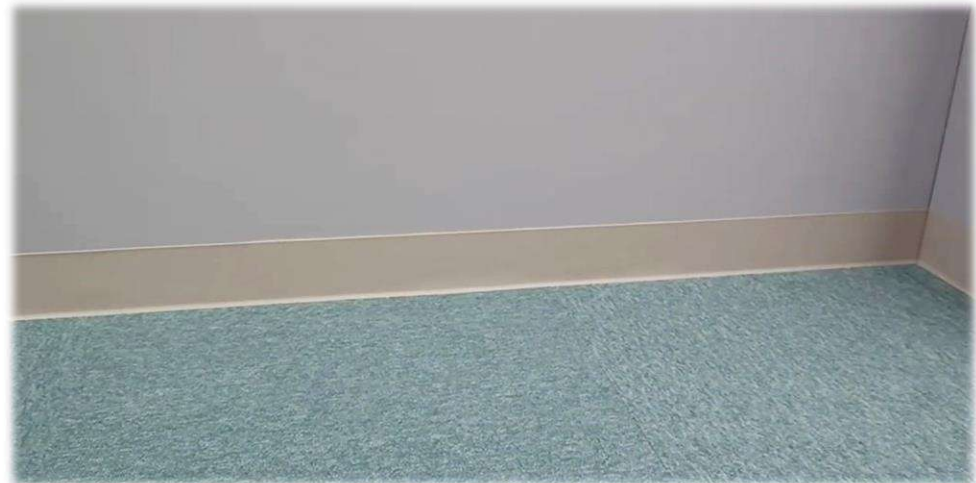


② Adhere HABAGI to wall, aligning to the floor line



③ Bond the entire surface with a roller

Tip The roller can be evenly pressed with a stable force, giving it beautiful finish



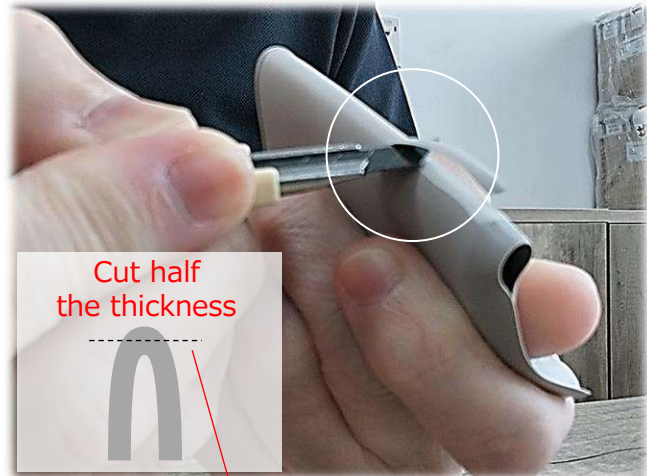
Tip

Scraping off the back of HABAGI makes it easier to bend

1. Fold HABAGI

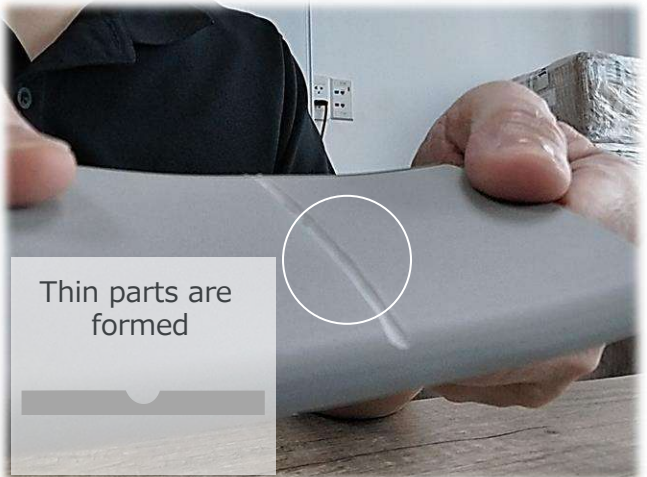


2. Scraping off the back with a box cutter

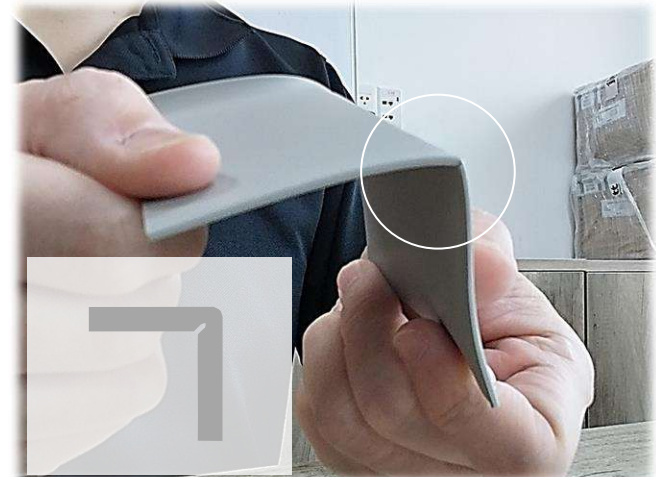


Be careful not to scrape too much

3. Undo

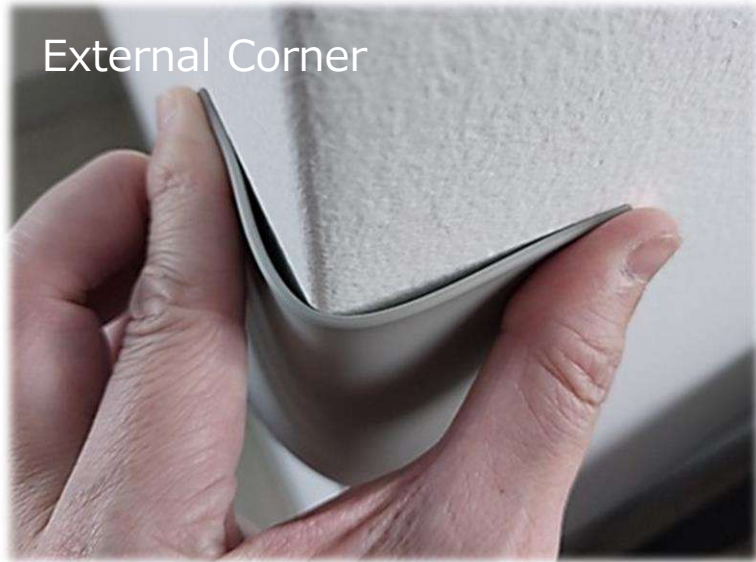


4. Easy to bend



✘ Gap is easy to appear

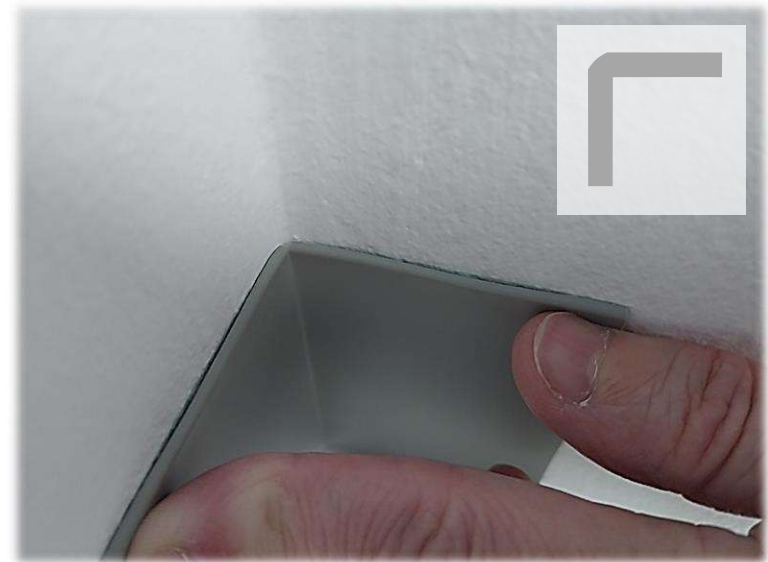
✔ Gap is hard to appear



Scrape off the back

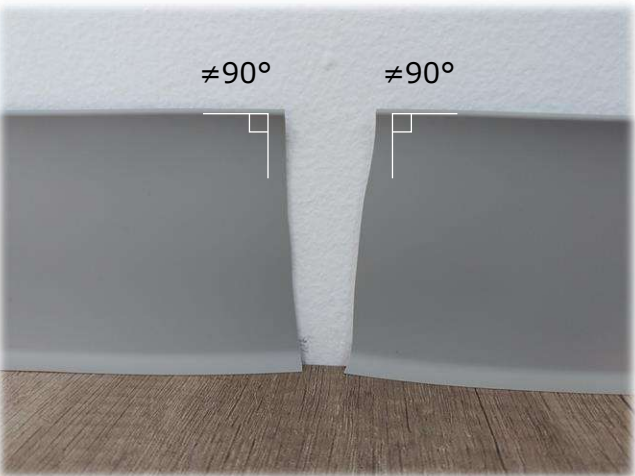


Scrape off the back

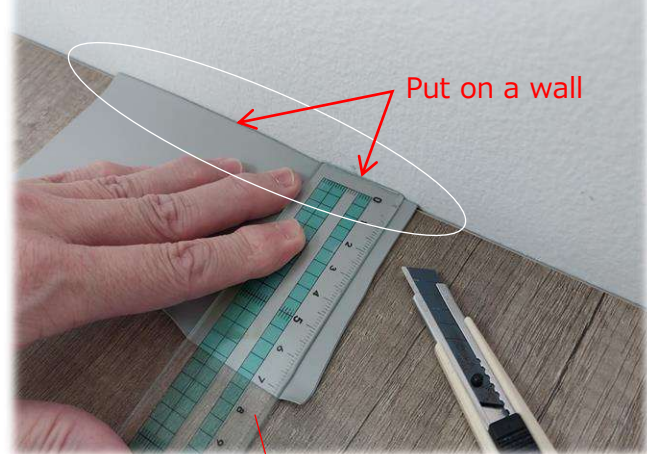


Tip Cutting at a right angle (90 degrees) makes the gap less noticeable.

1. In case the edges are not 90°

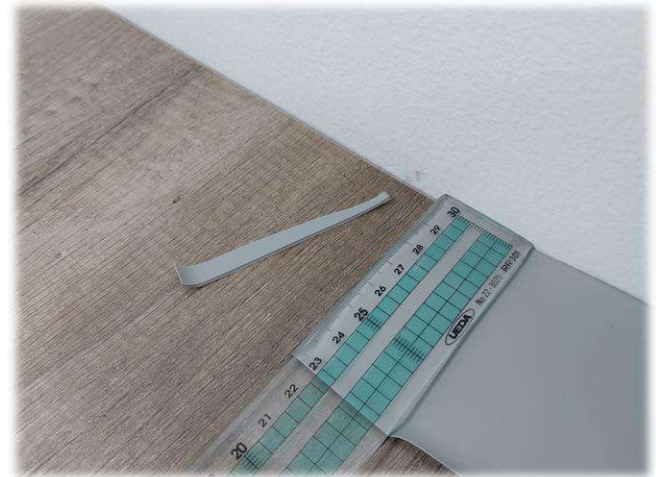
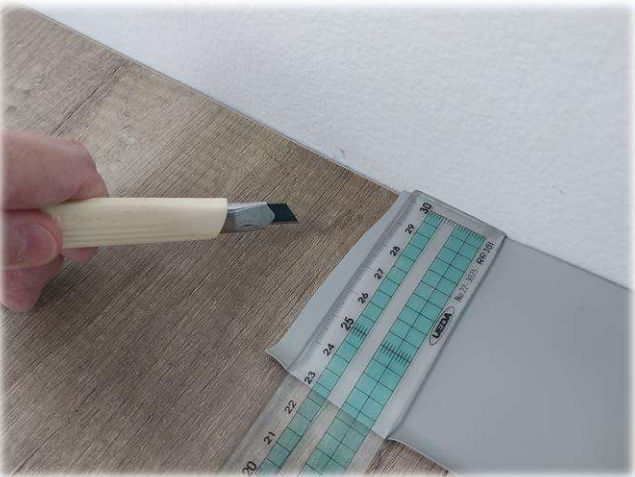


2. Put HABAGI and ruler on a straight wall
Cut along the ruler with a box cutter

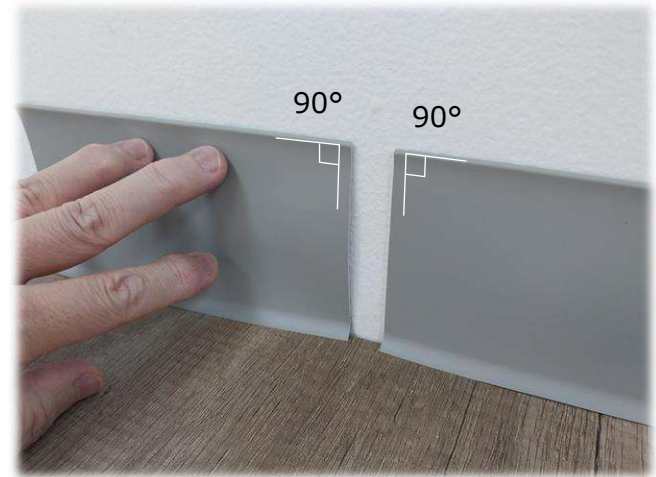


Anything with 90° will do

3. Cut the other edge similarly



4. Become 90°





Make a right angle

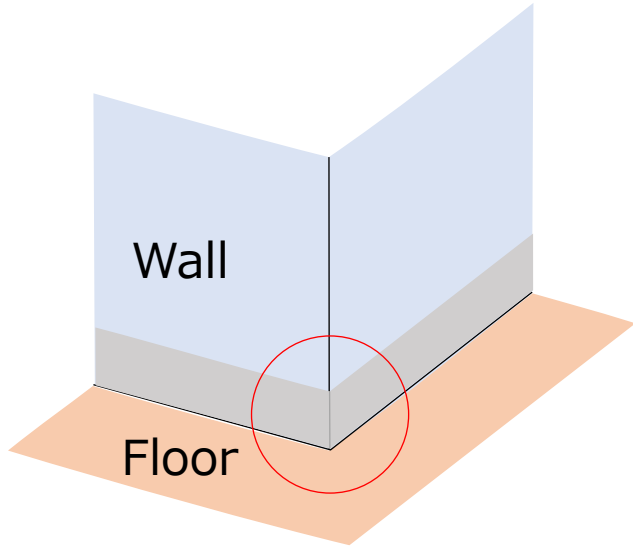


Gap is hard to appear



● Bending at corners

Does not turn white when bent



Looks **GOOD**



Looks **BAD**

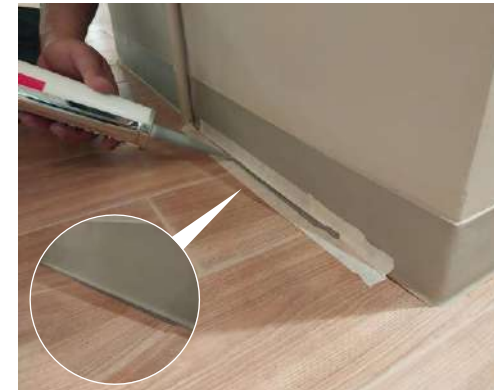
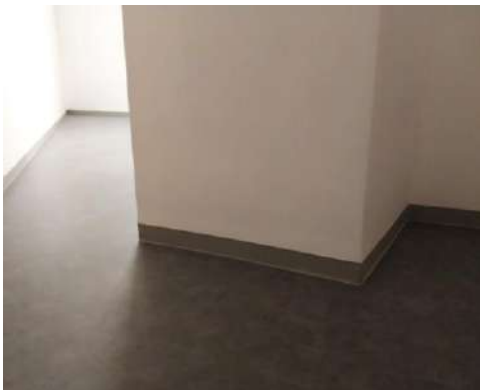


● Construction example <SOFT HABAGI>

■ OFFICE (HO CHI MINH / VIETNAM)



■ SHOP IN COMMERCIAL FACILITY (HO CHI MINH/VIETNAM)



■ WAREHOUSE OFFICE (HO CHI MINH/VIETNAM)



■ FACTORY (LONG AN/VIETNAM)



■ SHOP (HO CHI MINH/VIETNAM)



■ OFFICE (HO CHI MINH/VIETNAM)



■ FACTORY OFFICE (DONG NAI/VIETNAM)



■ OFFICE (TOKYO/JAPAN)

