



**FUKUVI**

- ◆To eliminate slippery floors in showers and bathrooms.
- ◆To reduce fall impact injuries on hard floors.



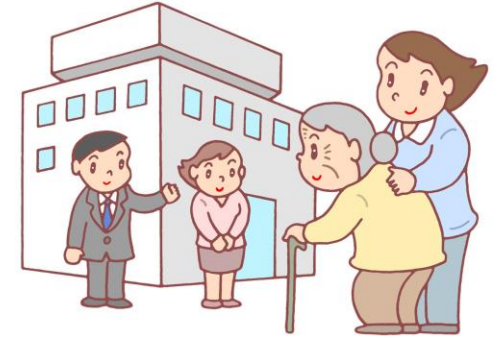
# Common Installation Locations



**Standalone House**



**Hospital**



**Nursing Home**



**Condominium**



**Apartment**

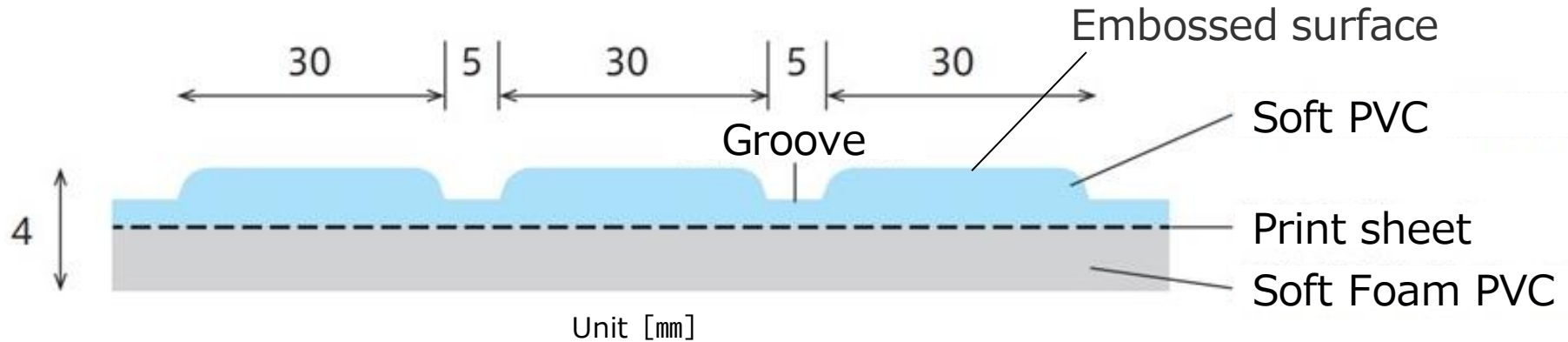


**Kindergarten**

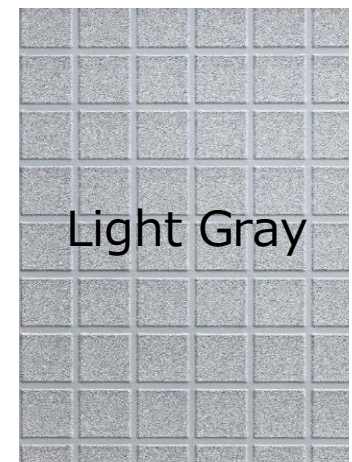


**Kids Space**

## ◆Material and Composition



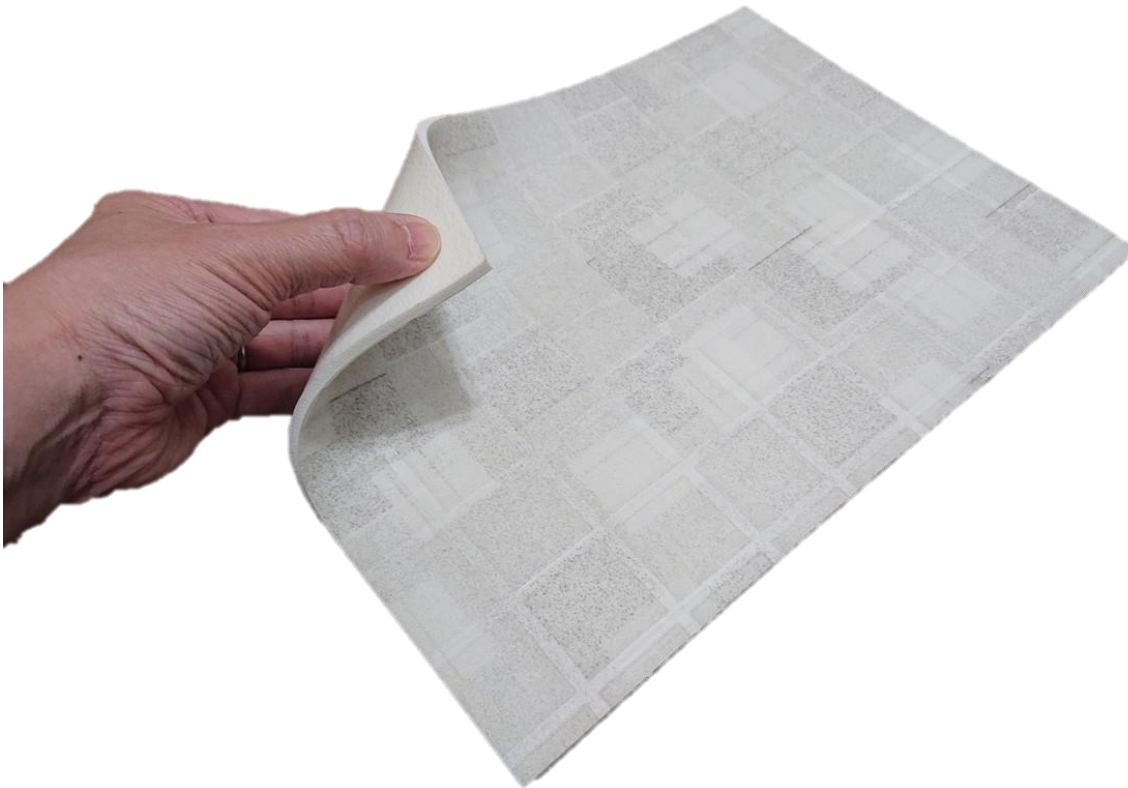
## ◆Color



## ◆Size Wide 1800mm × Length 10m (roll) × Thickness 4mm

## 1. Soft – Impact absorption, Comfortable environment

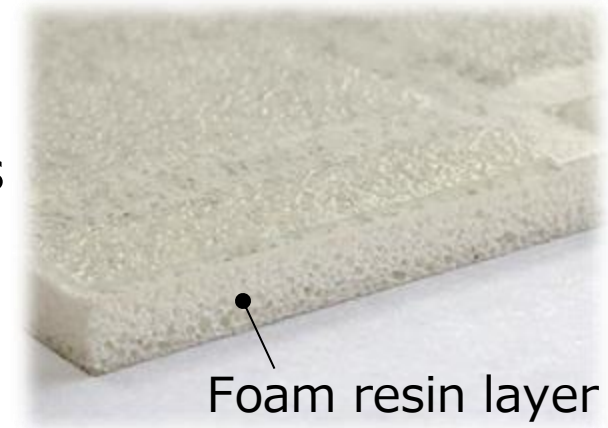
- Foam resin is used in the material's substrate
- The soft material reduces fall impact
- Comfortable to walk and stand on
- It doesn't hurt to kneel



## 2. Thermal Insulation

- Foam resin layer insulates from low temperatures
- It does not give you cold feet

**\* Especially effective in cold regions**

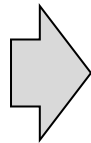


### ■ Thermographic Testing

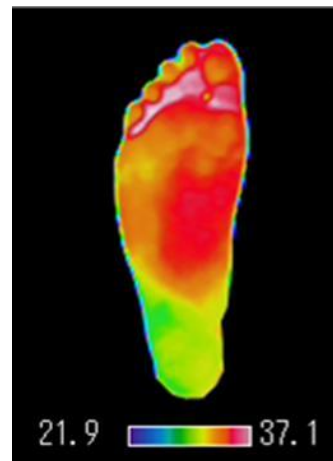
- Left : Thermographic image of the sole of a foot before testing  
Middle : Image after contact with a porcelain tile  
Right : Image after contact with ANKARA PLUS



Before testing



Porcelain tile



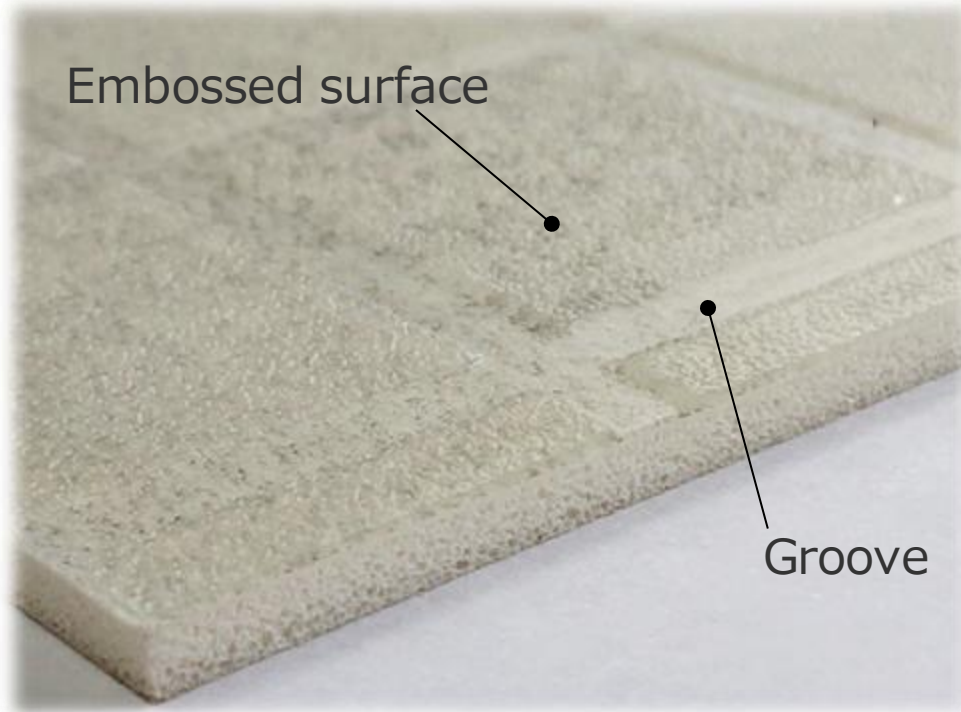
ANKARA



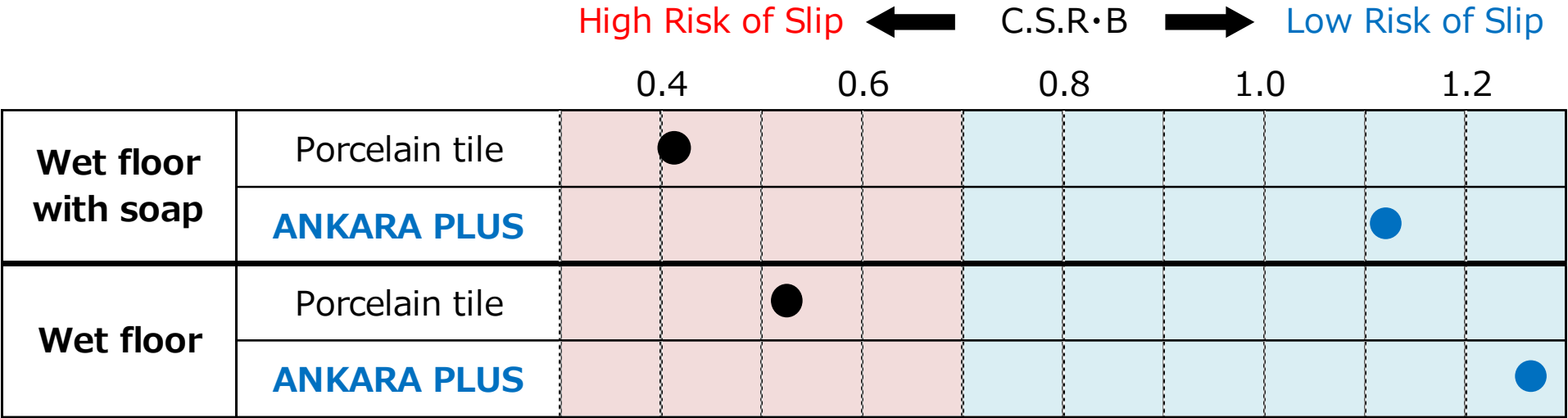
The porcelain tile and ANKARA PLUS are kept at 5°C with 20% humidity for a certain period.  
Thermographic images of the sole of a foot are taken after contact with the surfaces of the samples for a period of 10 seconds.

## 3. Anti-Slip

- Grooves and Embossing are formed onto the surface
- The design helps reduce the risk of slipping in wet or soapy conditions



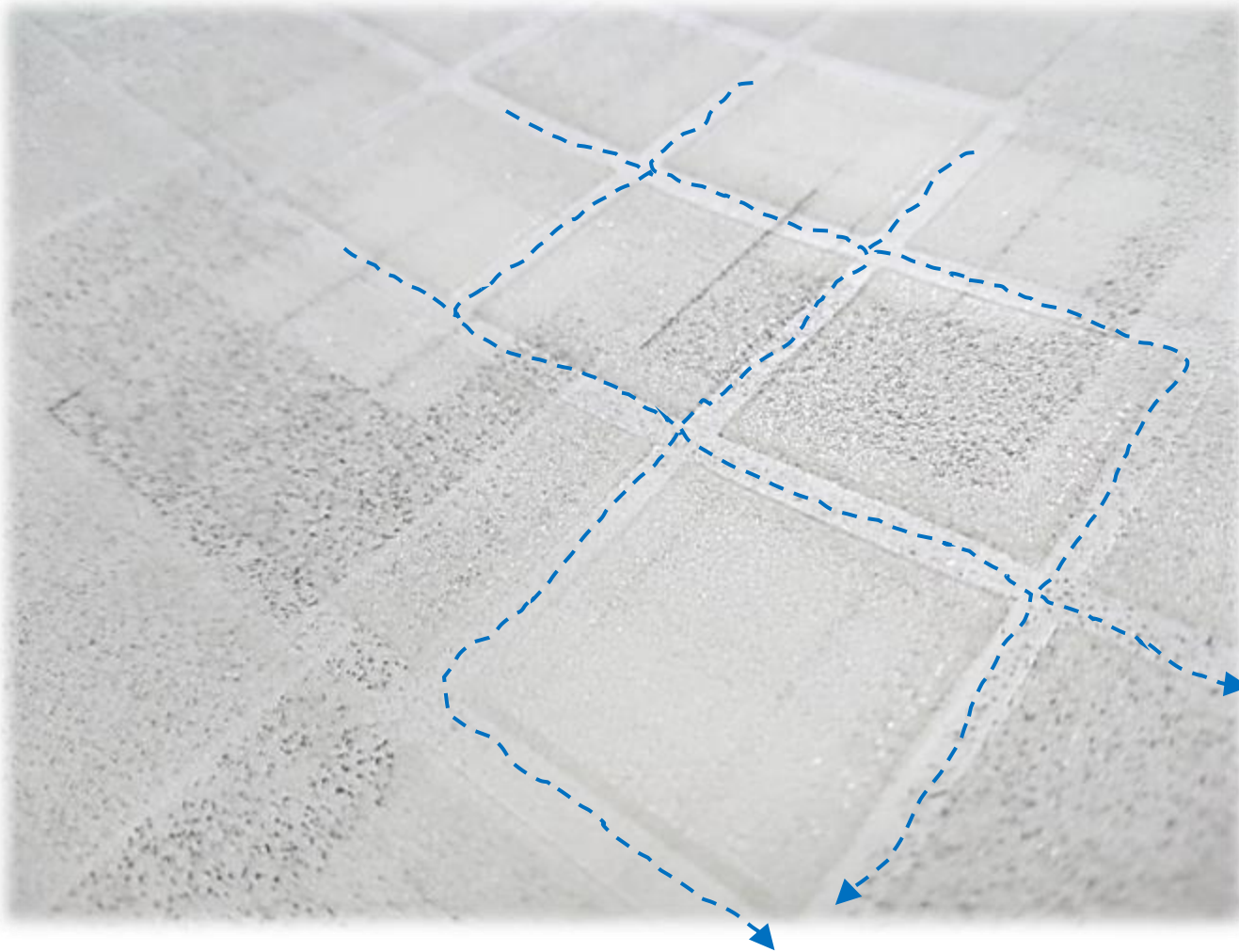
## ■ Barefoot Floor Slip Resistance Testing



- \*This test results of the flooring material satisfy the criteria of the Architectural Institute of Japan.
- \*C.S.R•B is a **C**oefficient of **S**lip **R**esistance that assumes walking **B**arefoot on a wet bathroom floor.
- \*Recommended value is **0.7 or above**.
- \*The value of ANKARA PLUS is **1.1 or above**.

## 4. Quick-Drying

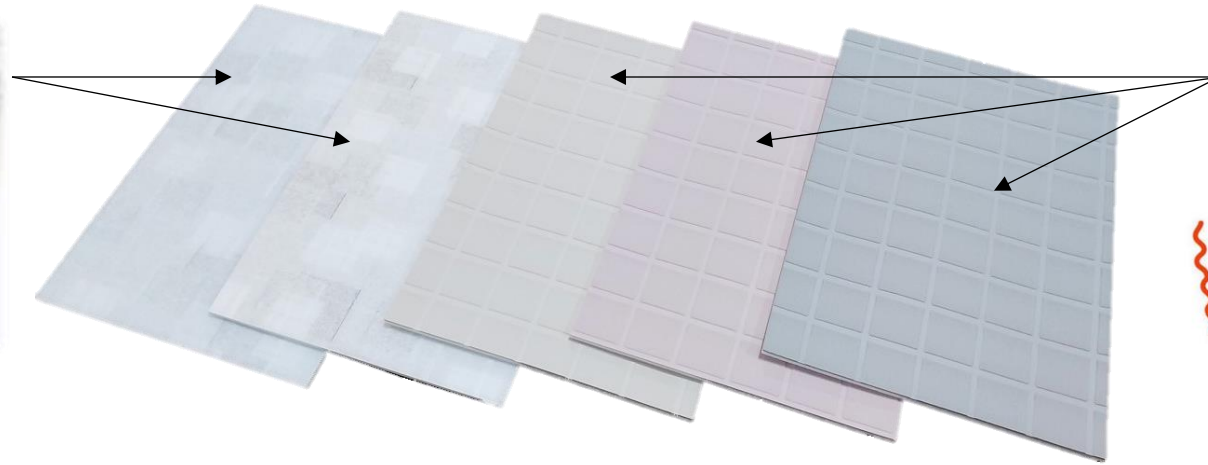
The grooved design allows water to drain easily



## 5. Stylish

The pattern resembles high-class granite

Warm colors



## 6. Repair

- Can be installed on dirty or cracked tiles
- Can be renovated quickly and easily

## 7. Easy Installation

- Can be cut with a box cutter
- Easy to stick to a floor base with adhesive



<https://youtu.be/k8OI5rsN-tI>



<https://youtu.be/OO9mHObxUdE>

# Installation Example



## ◆ Standalone House (Japan)

**Existing Floor** Tile

**Purpose** To renovate a slippery, old and cold floor

**Color** White



# Installation Example



## ◆Apartment (Japan)

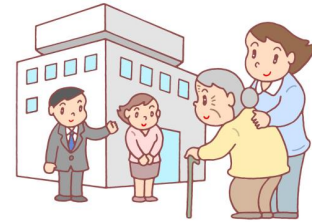
**Existing Floor** FRP

**Purpose** To renovate a slippery, dirty and faded floor

**Color** Gray



# Installation Example



## ◆Nursing Home (Thailand)

**Existing Floor**

Tile

**Purpose**

To prevent injuries caused by falls,  
which has been a common occurrence there for some time

**Color**

White



# Installation Example

※It is an image, not an actual installation



## ◆Hotel (Vietnam)

Existing Floor

Tile

Color

White



