

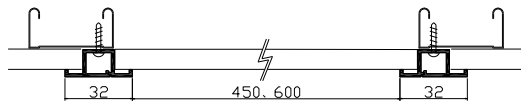
● Easy to open and close resin frame for ceilings



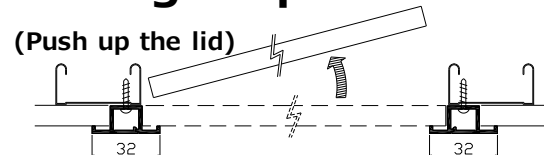
Key features

- Straight and clean frame
- Easy to install
- Light-weight lid is easy to open and close
- For paint finish or wallpaper finish
- Clean, neat appearance with either paint or wallpaper

● Installation drawing



● During inspection



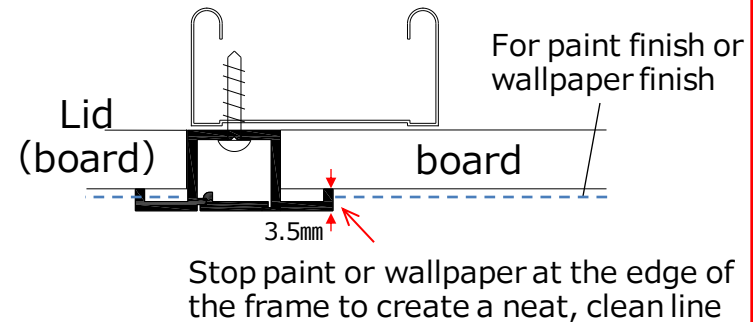
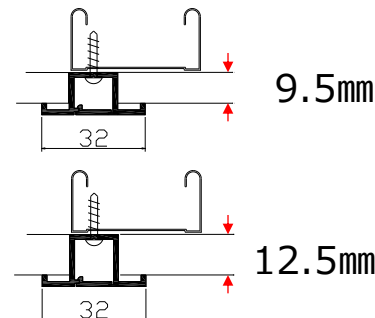
● Material : PVC

● Color : White

● Size : 450×450mm
600×600mm

● Attachable board thickness : 9.5、12.5mm

● MOQ : 25pcs



● Difference from general product

General Product



1. Dark line appears
2. Edges of the paint peel off easily
3. Heavy lid makes it difficult to push up
4. The heavy lid touches the hand strongly and easily gets dirty



● Difference from general product



FUKUVI - TENKENKO

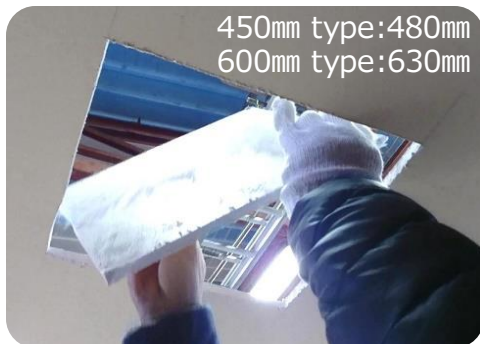


1. Lines do not appear (there is Straight and Clean frame)
2. Edges of the paint are hidden by the frame, making it difficult to peel off and even if it peels off, it is inconspicuous.
3. Light lid (Single layer) makes it easy to push up
4. Less likely to get dirty (compared to heavy lid)

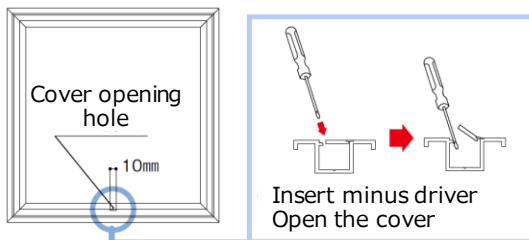
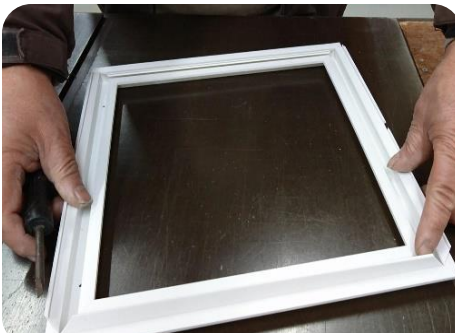
Other: If you forget to install it, you can easily install it later.

● Installation

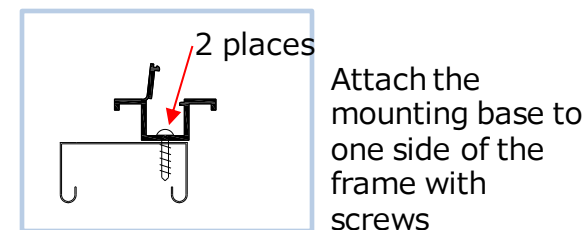
① Cut a hole in the ceiling



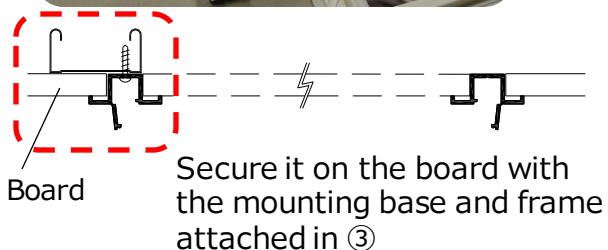
② Open the frame's cover



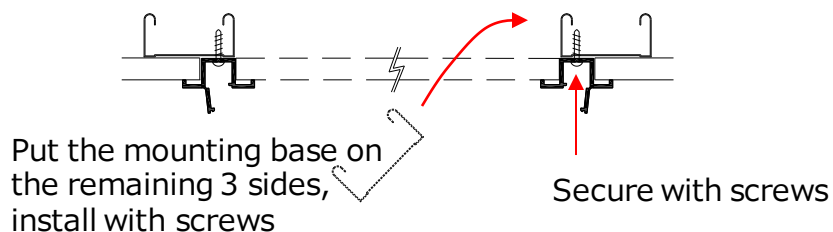
③ Attach the mounting base to one side of the frame



④ Put the mounting base on the board



⑤ Secure to the frame with screws



⑥ Close the cover and put the lid on



● Construction example <TENKENKO-T>

Cut the board



Make the opening



Secure to the frame



Put the lid on



■ OFFICE (HO CHI MINH / VIETNAM)



■ OFFICE (HO CHI MINH / VIETNAM)

