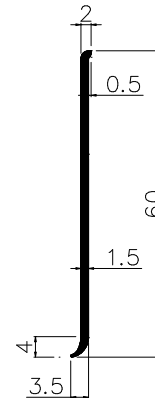


## ● Protects wall base from scratches and dirt



## ● Product drawing

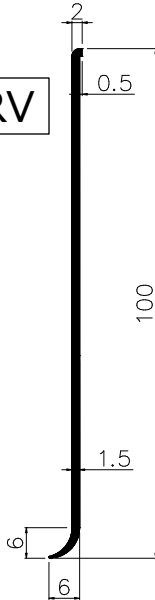
60RV



75RV



100RV



● **Material** : PVC

● **Color** : Black, Dark gray, Light gray, White

● **Length** : 30m(roll)

● **MOQ** : 1 roll

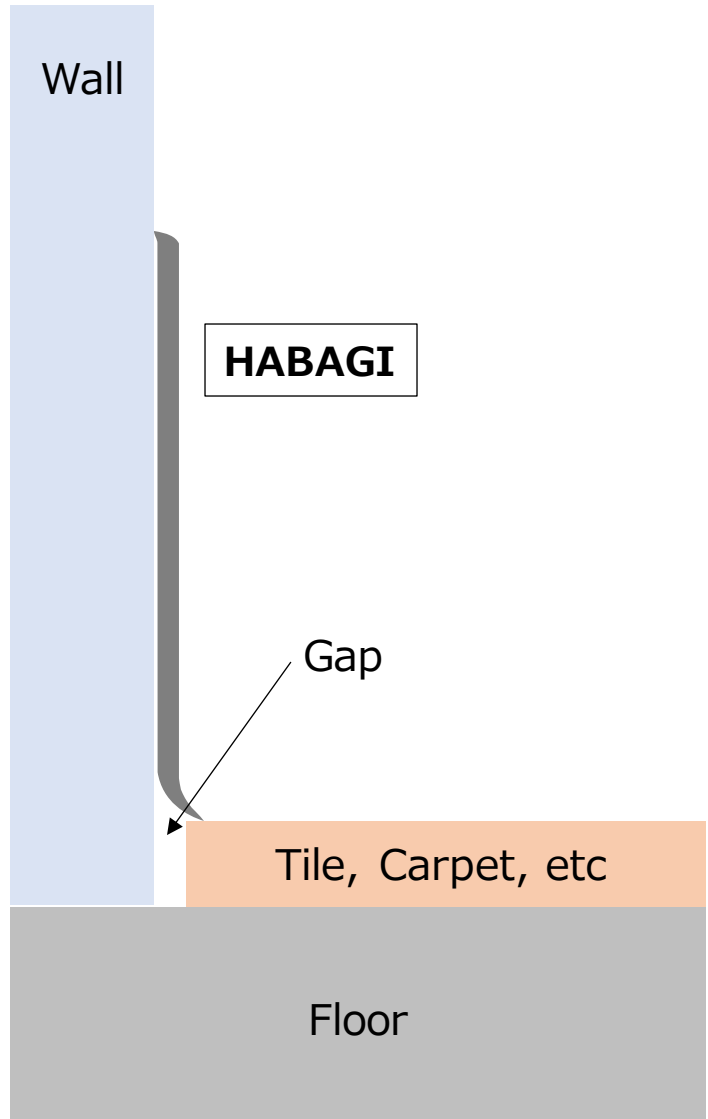
## Key features

- Protects wall base from scratches and dirt
- Creates straight and neat lines between walls and floor
- Easy to cut with box cutter and attach with adhesive glue
- Soft resin material makes it easy to install along curves
- Does not turn white when bent
- Compact roll storage makes it easy to carry and stock



# ● Purpose of HABAGI

To hide the gap between the wall and the floor



To prevent dirt from dust and water and scratches from cleaning tools



# ● Installation

## Tools prepared in advance (Recommendation)

Adhesive



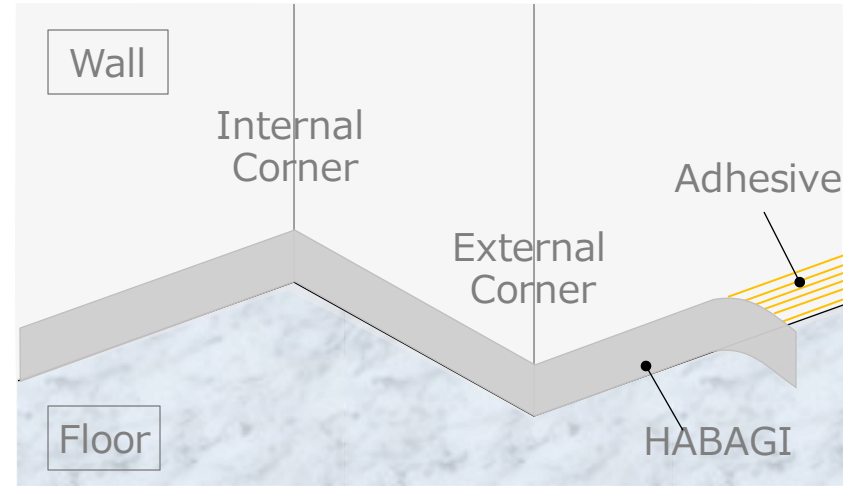
Comb-shaped Spatula



Roller



Box Cutter

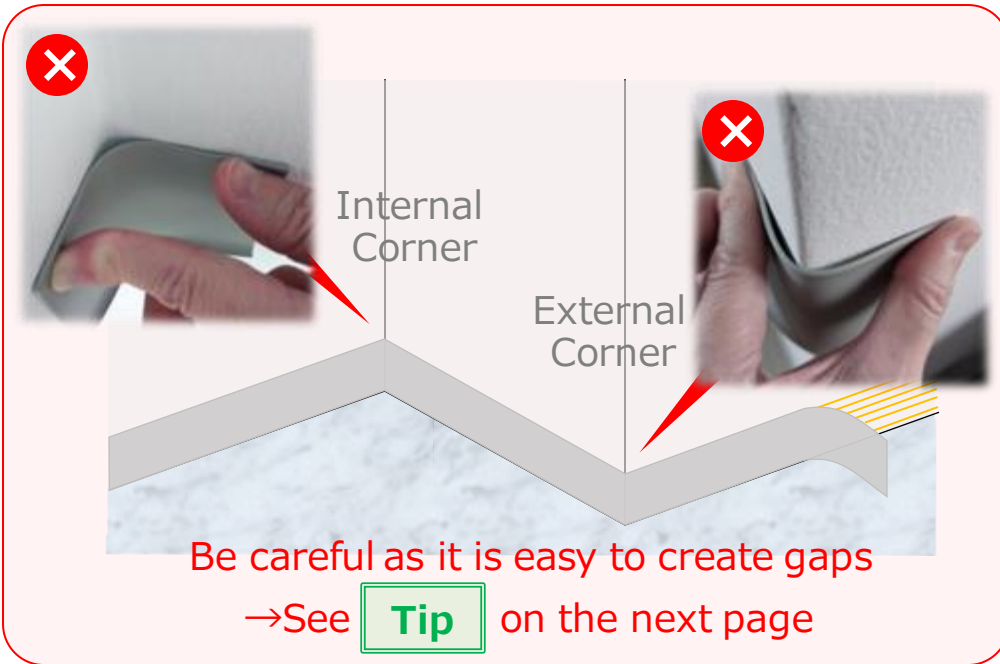


① Apply adhesive to the back of HABAGI , or the back of HABAGI and the wall with a spatula

**Tip** Use a comb-shaped spatula to apply the required amount evenly



② Adhere HABAGI to wall,  
aligning to the floor line



③ Bond the entire surface with a roller

**Tip** The roller can be evenly pressed with a stable force, giving it beautiful finish



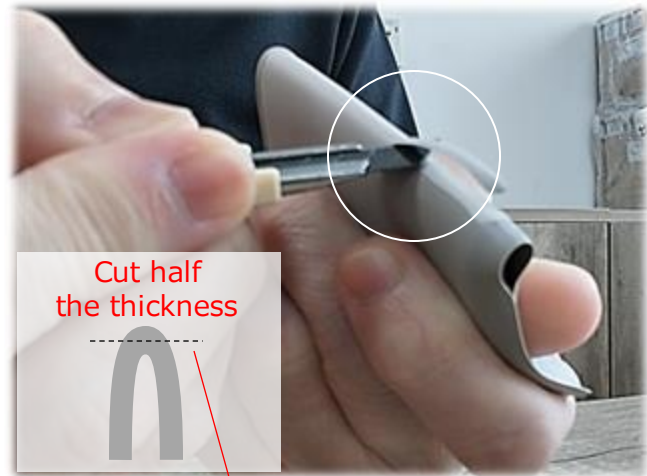
**Tip**

Scraping off the back of HABAGI makes it easier to bend

1. Fold HABAGI



2. Scraping off the back with a box cutter



Be careful not to scrape too much

3. Undo



4. Easy to bend

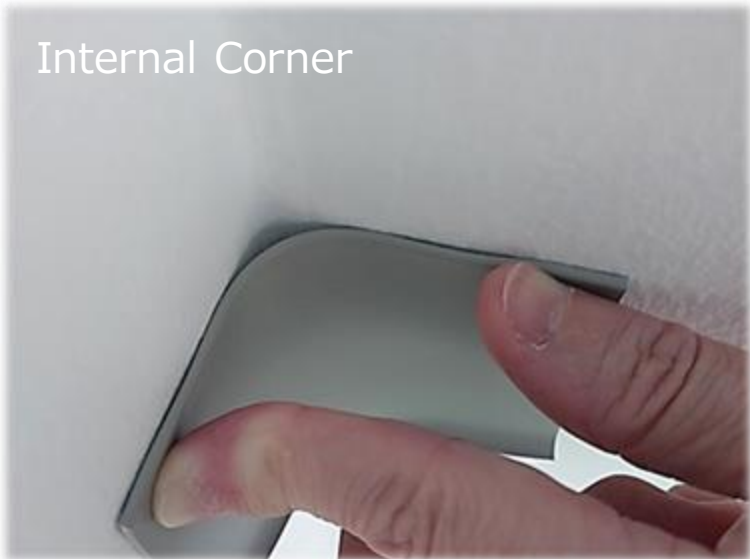


**✘ Gap is easy to appear**

**✔ Gap is hard to appear**



Scrape off the back

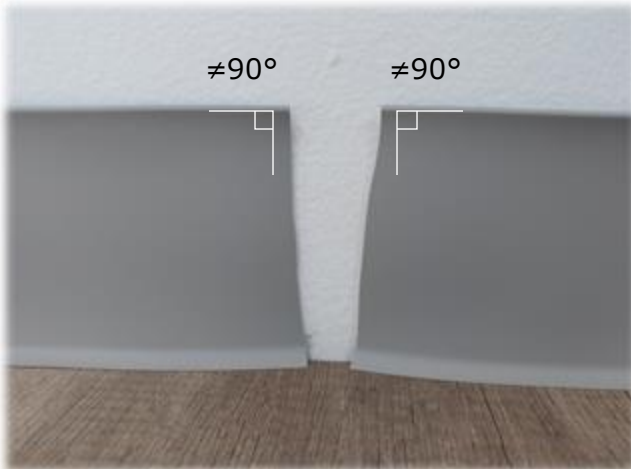


Scrape off the back

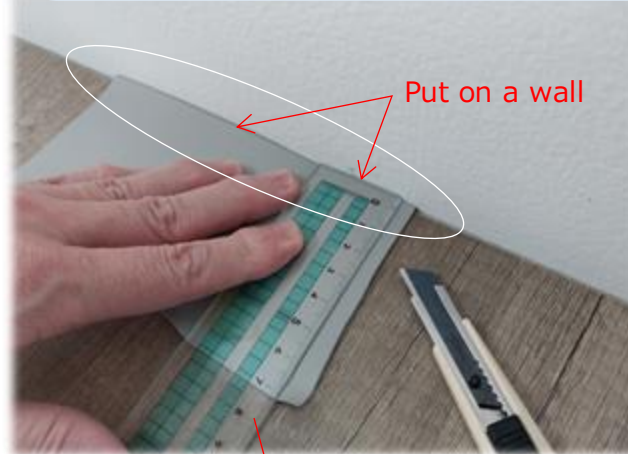


**Tip** Cutting at a right angle (90 degrees) makes the gap less noticeable.

1. In case the edges are not 90°

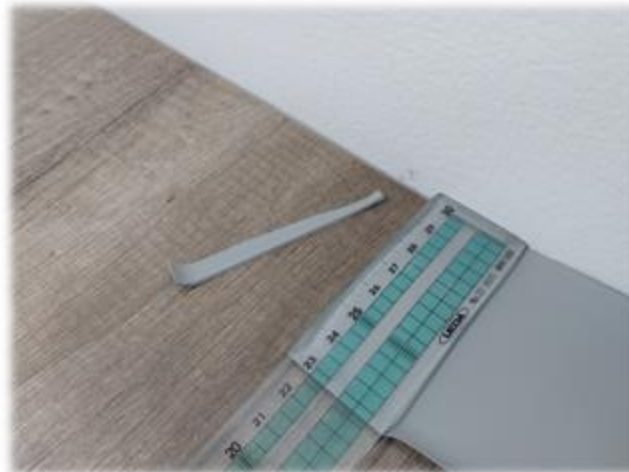
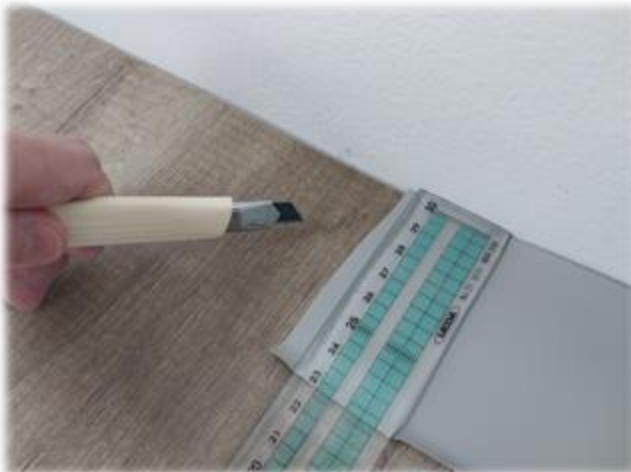


2. Put HABAGI and ruler on a straight wall  
Cut along the ruler with a box cutter

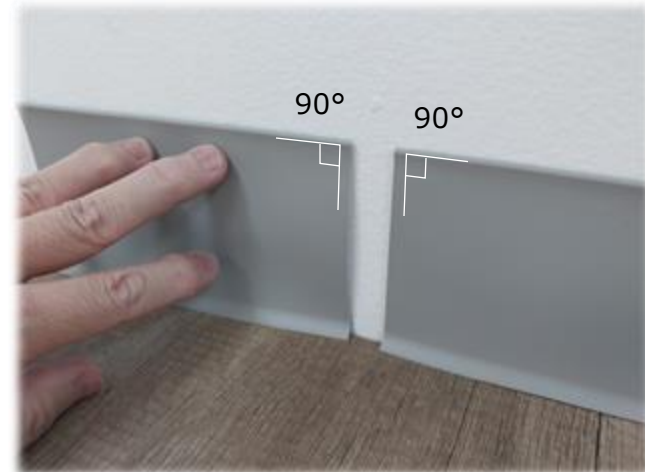


Anything with 90° will do

3. Cut the other edge similarly



4. Become 90°





Make a right angle



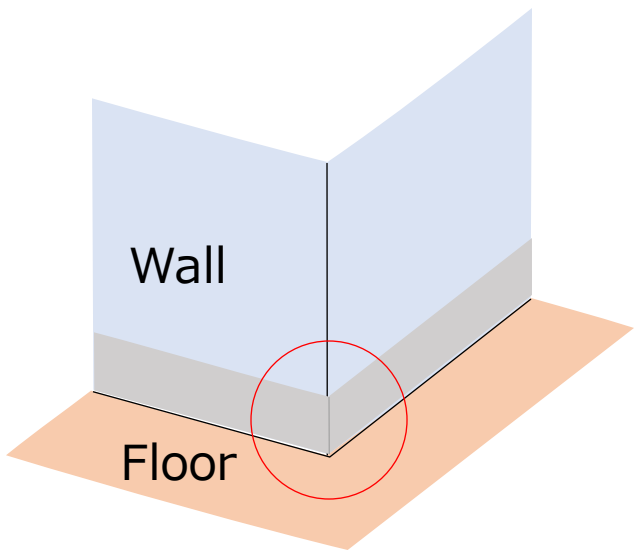
Gap is hard to appear





# ● Bending at corners

Does not turn white when bent



Looks GOOD



Looks BAD



# ● Construction example <SOFT HABAGI>

■ OFFICE (HO CHI MINH / VIETNAM)



■ SHOP (HO CHI MINH / VIETNAM)



■ OFFICE (HO CHI MINH / VIETNAM)



■ **FACTORY OFFICE (DONG NAI/VIETNAM)**



■ OFFICE (TOKYO/JAPAN)

