

TENKENKO - V

Inspection Opening Frame

TENKENKO has been an irreplaceable line of products used in residential, commercial, and industrial construction in Japan, for decades. Designed to provide easy access to the ceiling cavity and blend-in with the installation surface, **TENKENKO-V** is the perfect solution for any construction project. Easy installation allows for the product to be installed during new building construction or as an addition to an already finished building. High quality materials and strict quality control used in the manufacturing of the product ensure longevity and reliability our customers can depend on. Meticulously designed and tested to meet the rules and regulations, and the high expectations of the international market.



Features



Quick Installation
Easy 8-Step Installation



Lightweight
Designed to be lightweight



PVC
Made of PVC material with stable physical properties



Easy Access
Easy access to interior with simple open/close method



Easy to Paint/Wallpaper
Easy to paint/wallpaper the frame after applying putty to blend it into the ceiling surface



Clean/Straight/Invisible Lines
Allows for clean & straight line finish while also making the frame lines thin & preventing visible gaps



MADE IN VIETNAM



Product Page

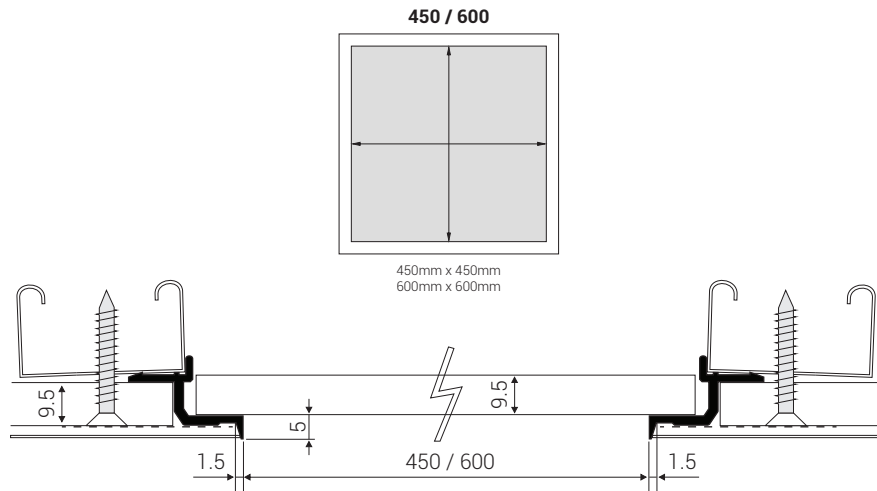


Product List

Model	Design	Dimensions	Color	MOQ
TENKENKO - V	450	450mm x 450mm	White	25pcs
	600	600mm x 600mm		25pcs

Note: The dimensions listed for this product are the dimensions of the usable opening after installation. The cut in the installation surface, prior to installation, will require an additional 30mm to be added to each dimension, i.e. V600 requires a cut opening of 630x630mm for a finished usable opening of 600x600mm.

Model Design

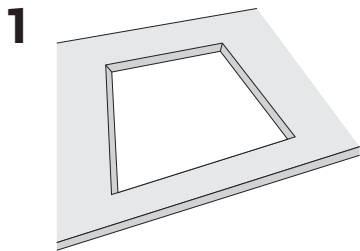


Note: All models fit 9.5mm ceiling/gypsum board.

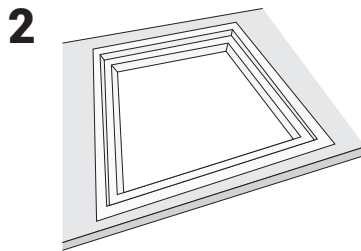
Installation Guide



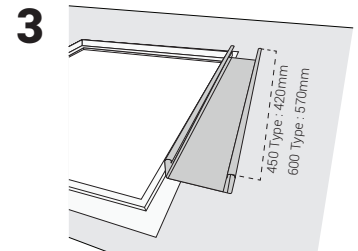
Installation Video



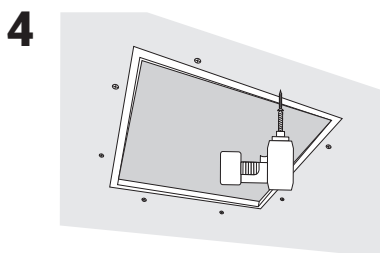
Cut an opening in the ceiling board to the appropriate size.
450 - 480x480mm
600 - 630x630mm



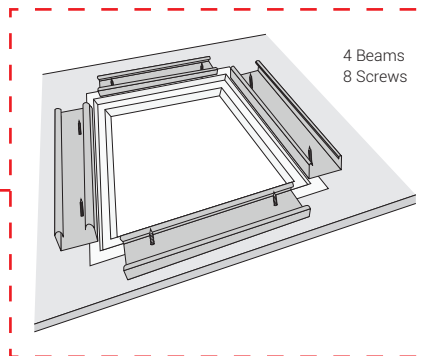
Insert the frame into the cut opening.



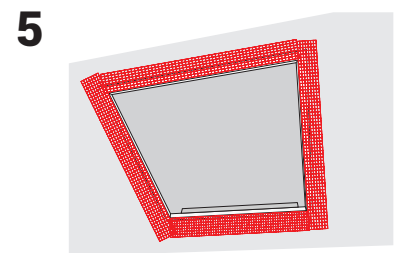
Set the supporting beams on top of the frame, sandwiching the frame between the beams and board.



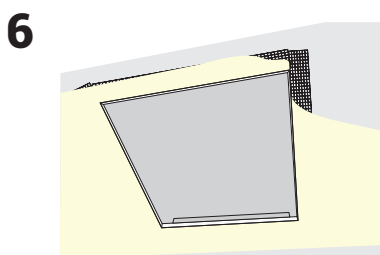
Attach the beams to the board by using 2 screws/beam. Make sure the frame remains sandwiched between the beams and the board.



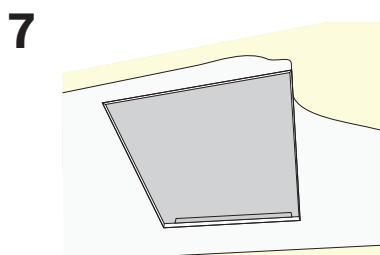
4 Beams
8 Screws



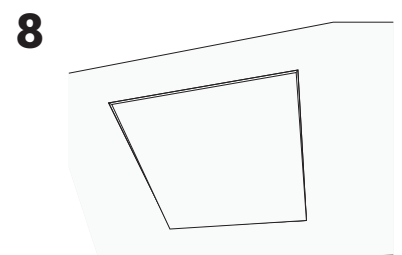
Attach reinforcement tape onto the board and frame, making sure the tape covers the visible portion of the frame and part of the board.



Spread putty around the frame and the rest of the surface.



Paint or wallpaper the surface.



Set the lid.