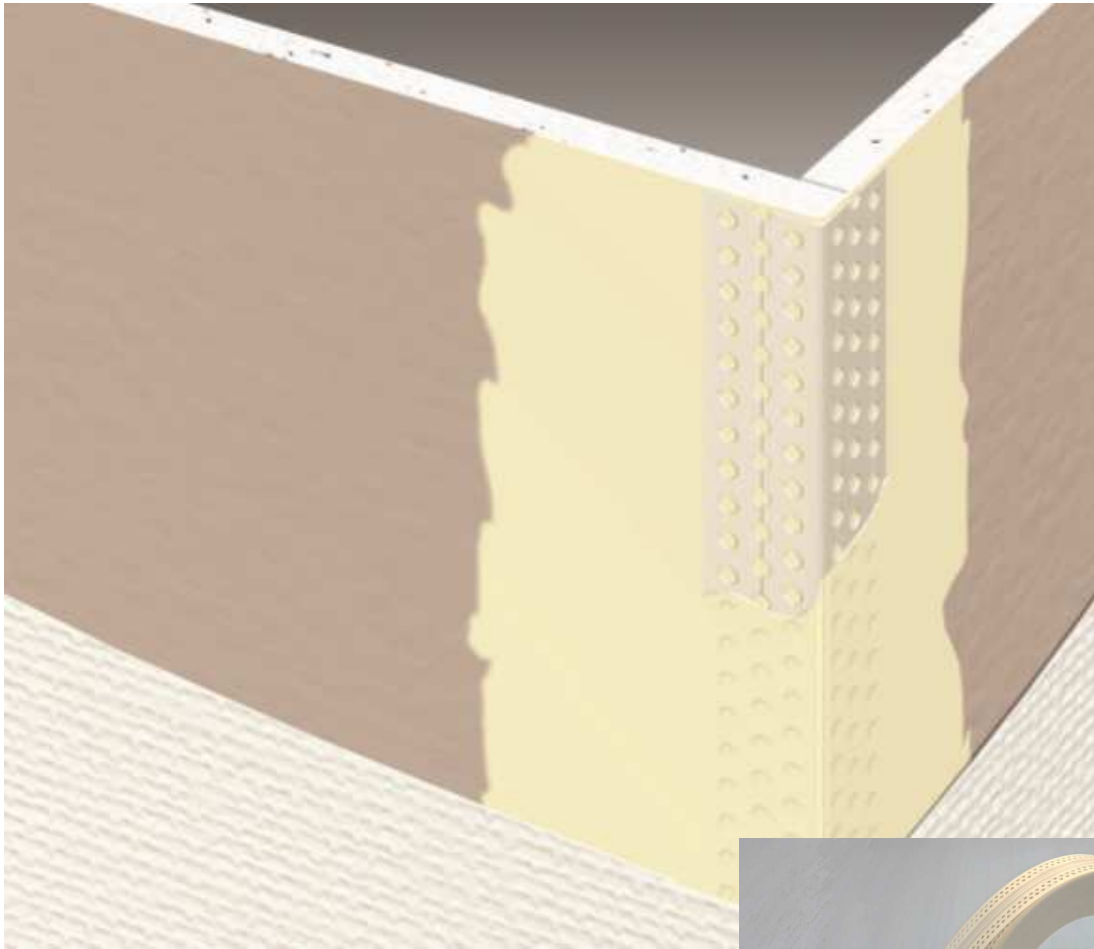


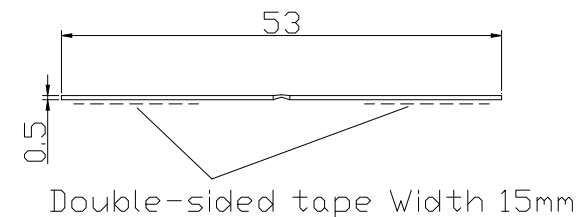
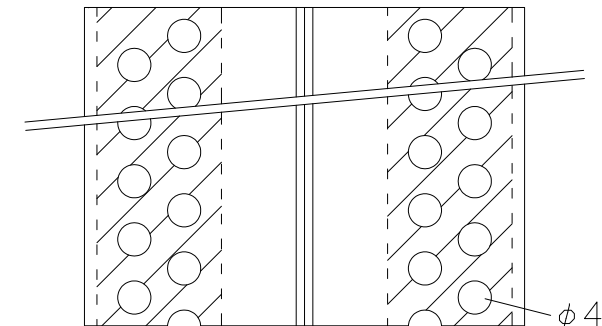
● Finish corners neatly



Key features

- Easy to install with double-sided tape
- Make straight corner lines
- Improves strength and protects corners from impact
- For paint finish or wallpaper finish
- Compact roll, convenient to carry and store

● Product drawing



● **Material** : PVC

● **Color** : White 

● **Length** : 50m (Roll)

● **Width** : 53mm (One side 26.5 mm x 2 sides)

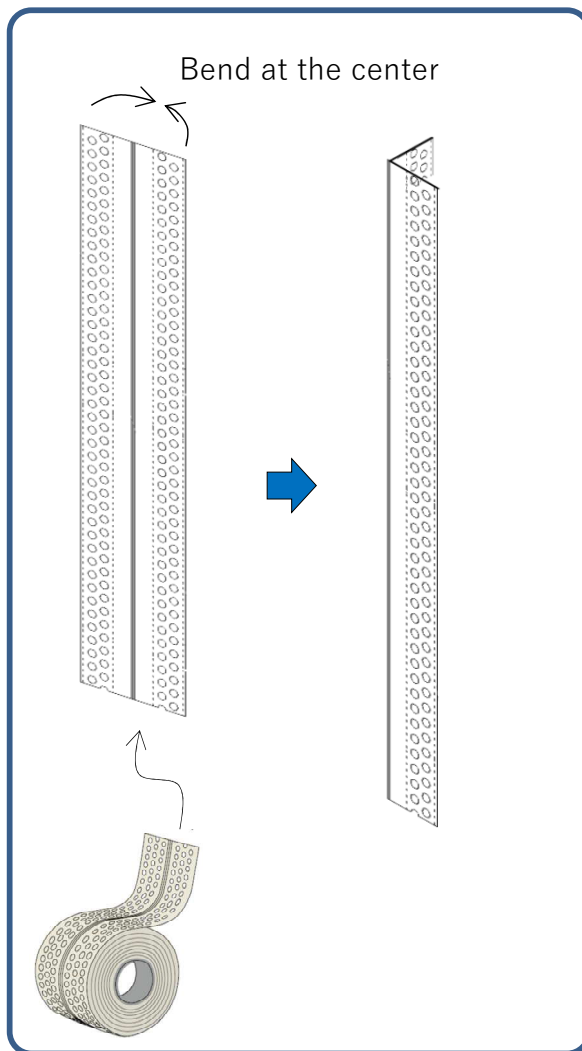
● **MOQ** : 6pcs



● Installation

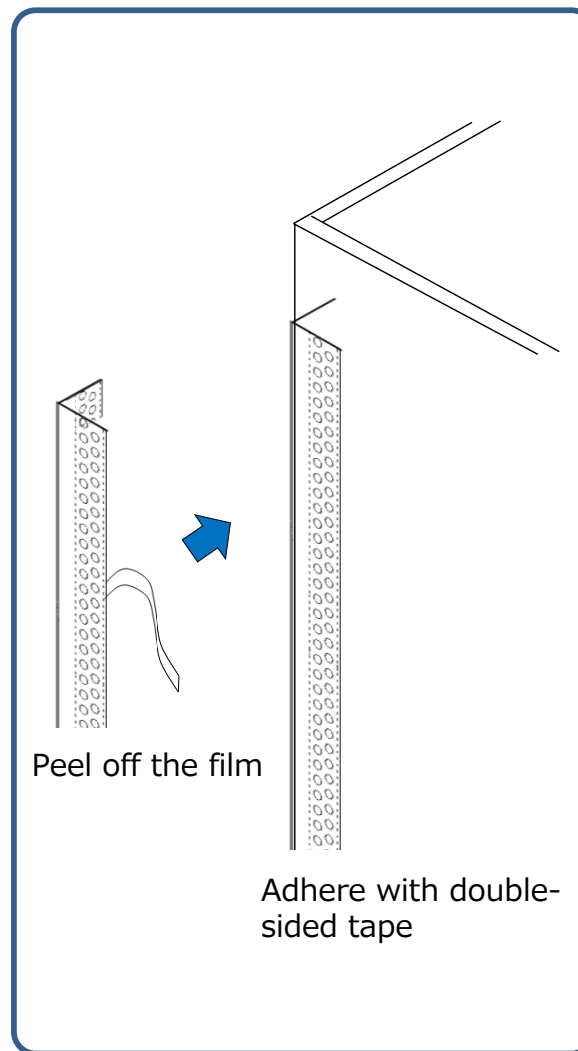
① Cut and bend

- Unroll the CORNER BEAD-B and cut it to the required length
- Next, bend in half down the length of the tape



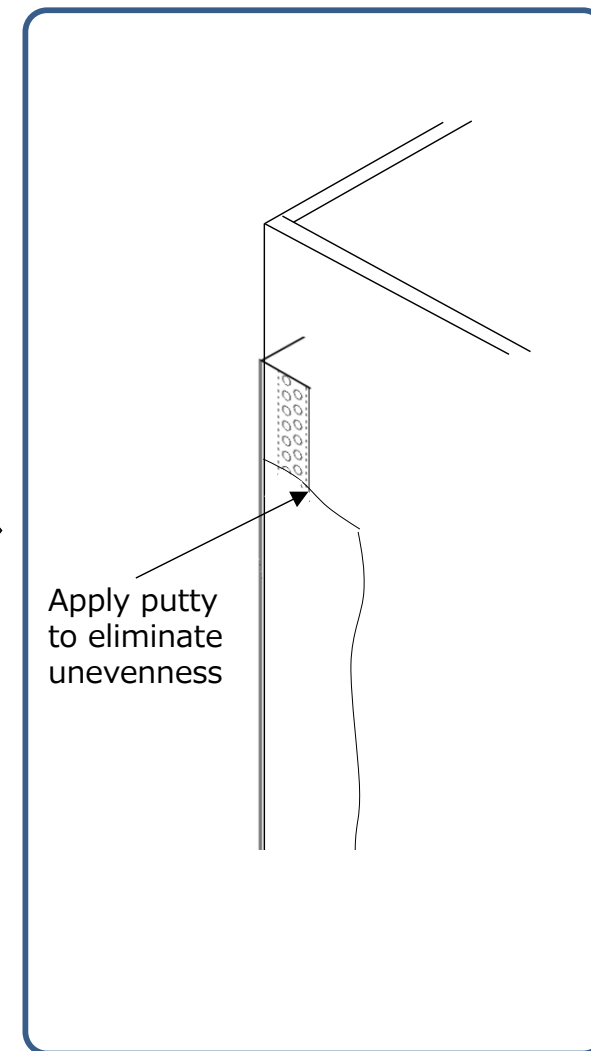
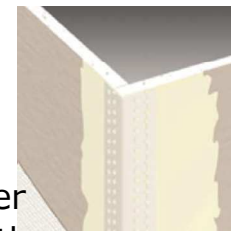
② Adhere to wall corner

- Peel off the backing film, and attach the corner tape to the corner of the wall



③ Apply Putty

- Apply putty to eliminate the step between the corner bead-B edge and the board.



● Construction example <CORNER BEAD-B>

