

MIKIRI

Transition Ceiling Trim

MIKIRI, designed to hide the gaps and edges between the wall and the ceiling, MIKIRI is the perfect solution for any construction project that requires a clean and modern finish. Manufactured from PVC, MIKIRI is durable, lightweight, rigid, doesn't rust and is easily cut with scissors/clippers. All this allows for extremely easy installation during new building construction or renovation. Our multiple design variations give our customers additional appearance options not previously available. It is now easier than ever to hide the unwanted gaps or imperfections where the wall meets the ceiling. High quality materials and strict quality control, used in the manufacturing of the product, ensure longevity and reliability our customers can depend on. Meticulously designed and tested to meet the rules and regulations, and the high expectations of the international market.

Features



Quick Installation
Easy 3-Step Installation



PVC
Made of PVC material with stable physical properties



Easy to Cut
Easy to cut with clippers



NO Adhesive
No adhesive or caulking needed for installation



Clean/Straight Lines
Perfectly hides uneven edges & creates straight, neat lines between wall & ceiling



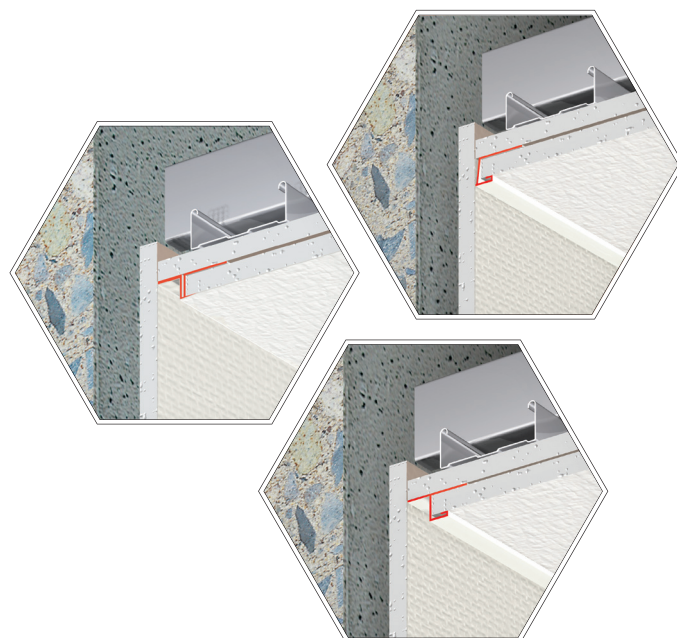
Easy Joint
Simple joint system prevents misalignment between multiple pieces at joint area



MADE IN VIETNAM



Product Page



Product List

	Model	Design	Dimensions	Color	MOQ
MIKIRI	A1-9V	see page 2	2,000mm	White	100pcs
	A1-12V		2,000mm		100pcs
	V-9V		2,000mm		100pcs
	V-12V		2,000mm		100pcs
	V-9NV		2,000mm		100pcs
	★ FP-9V		2,000mm		100pcs
	FP-9VP		2,000mm		100pcs
	FP-12V		2,000mm		100pcs

★ Models marked with the star symbol represent products that have been discontinued but will remain available for purchase until the available stock runs out. Please contact our local office to confirm availability of the discontinued models.

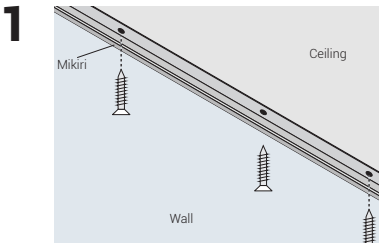
Model Design

Model	Design	Model	Design	Model	Design
A1-9V		V-9V		★FP-9V	
A1-12V		V-12V		FP-9VP	
		V-9NV		FP-12V	

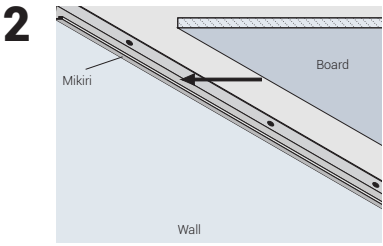
★ Models marked with the star symbol represent products that have been discontinued but will remain available for purchase until the available stock runs out. Please contact our local office to confirm availability of the discontinued models.

Note: Please make sure to check which models fit the 9.5mm board and which fit the 12.5mm board.

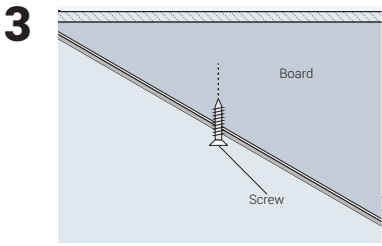
Installation Guide



Secure **MIKIRI** to the ceiling along the wall with screws.



Insert ceiling board (e.g., gypsum board) into the secured **MIKIRI**.



Secure the ceiling board (e.g., gypsum board) to the ceiling.